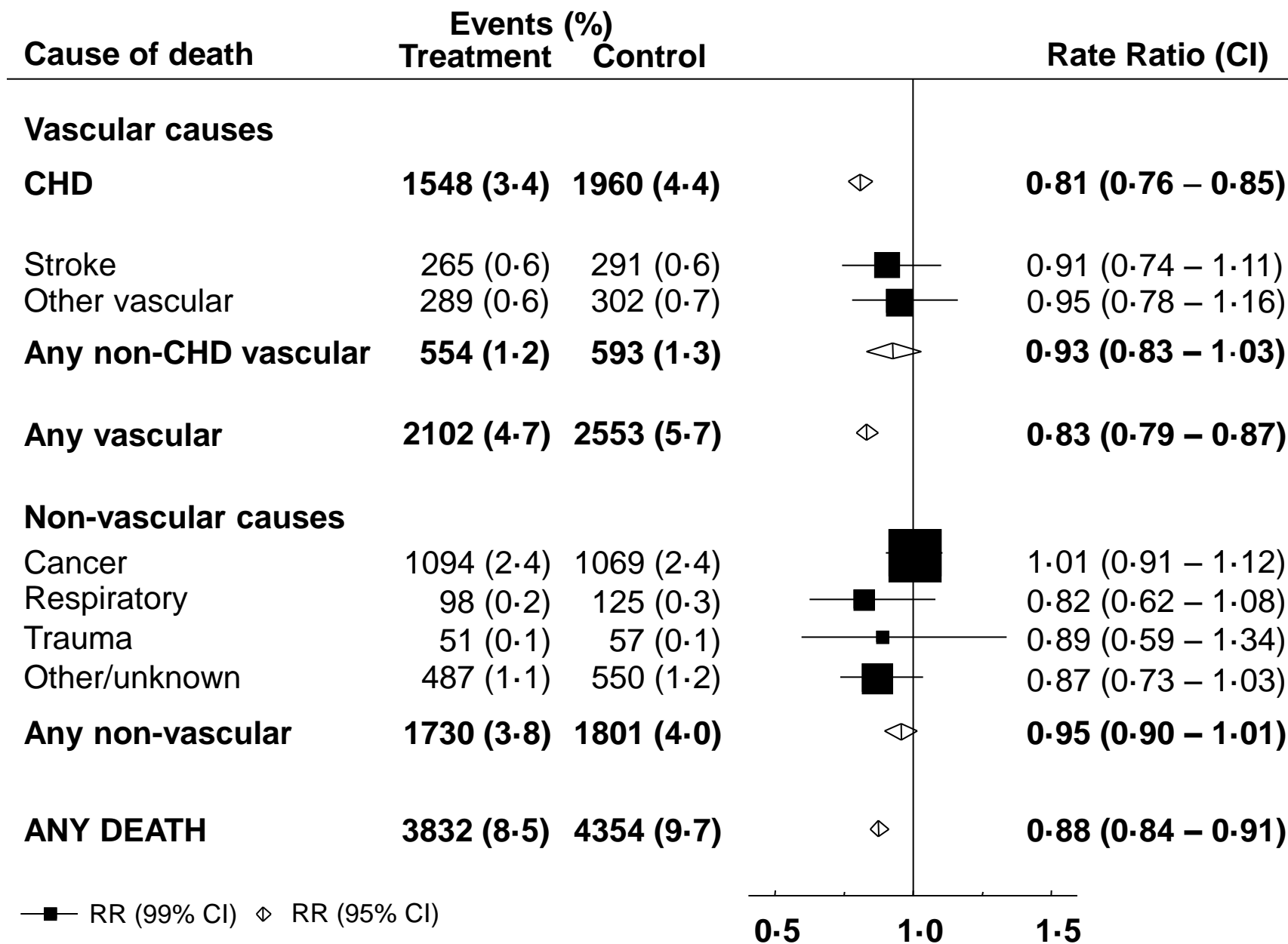


Efficacy and safety of cholesterol-lowering
treatment: prospective meta-analysis of data
from 90,056 participants in 14 randomised
trials of statins

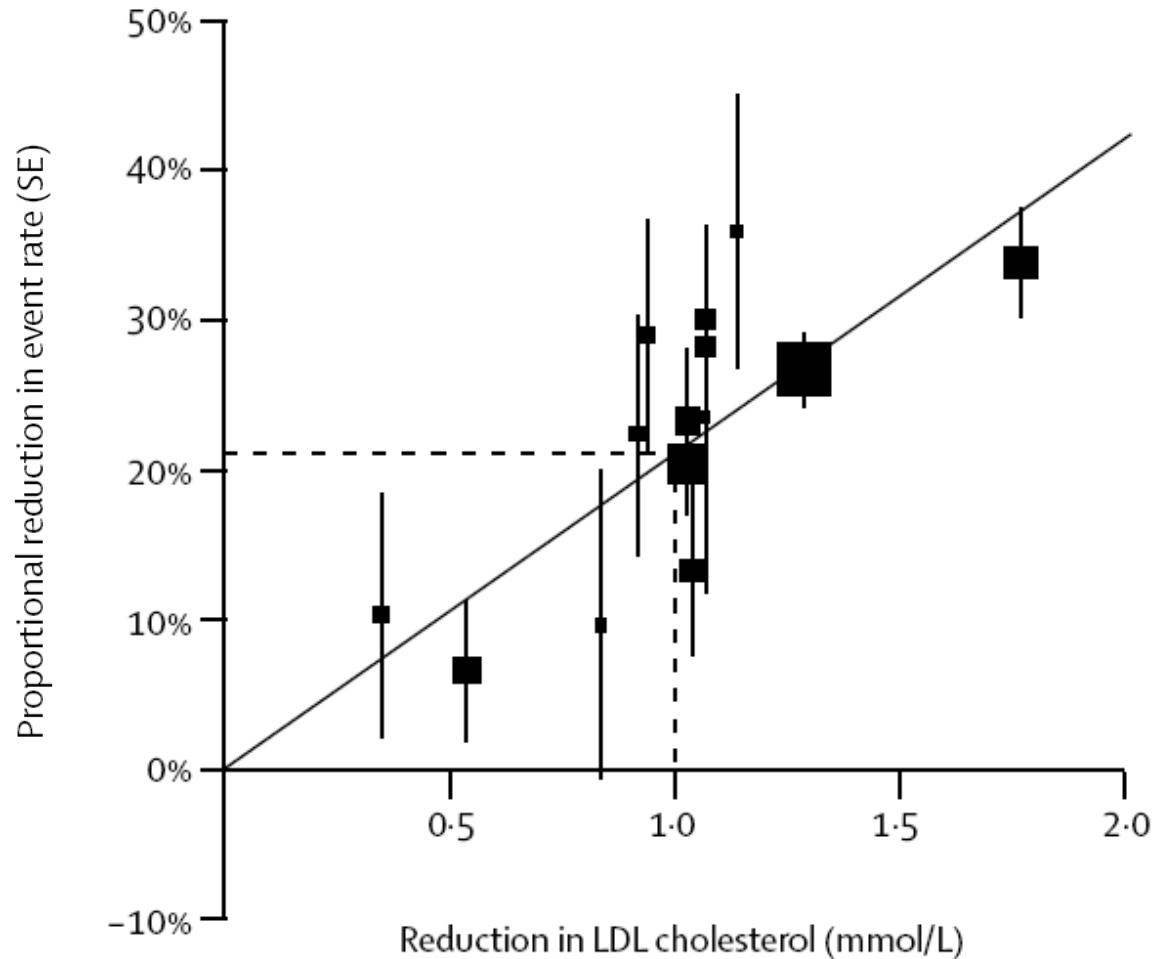
Lancet 2005 **366**: 1267-1134

doi:10.1016/S0140-6736(08)60104-X

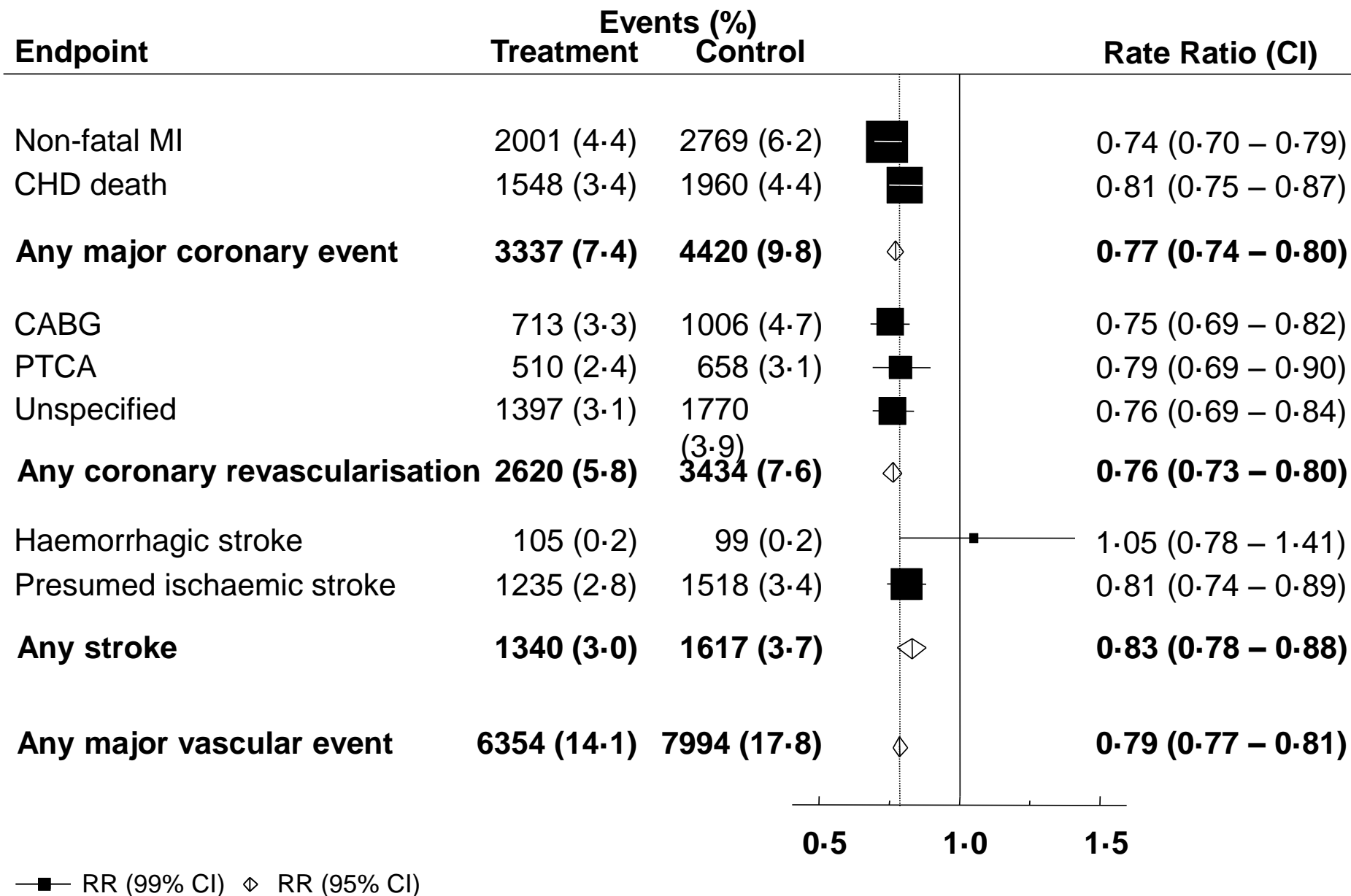
Effects on CAUSE-SPECIFIC MORTALITY per mmol/L LDL cholesterol reduction



Relation between the proportional reduction in MAJOR VASCULAR EVENTS and mean absolute LDL reduction in 14 statin trials



Effects on MAJOR VASCULAR EVENTS per mmol/L LDL cholesterol reduction

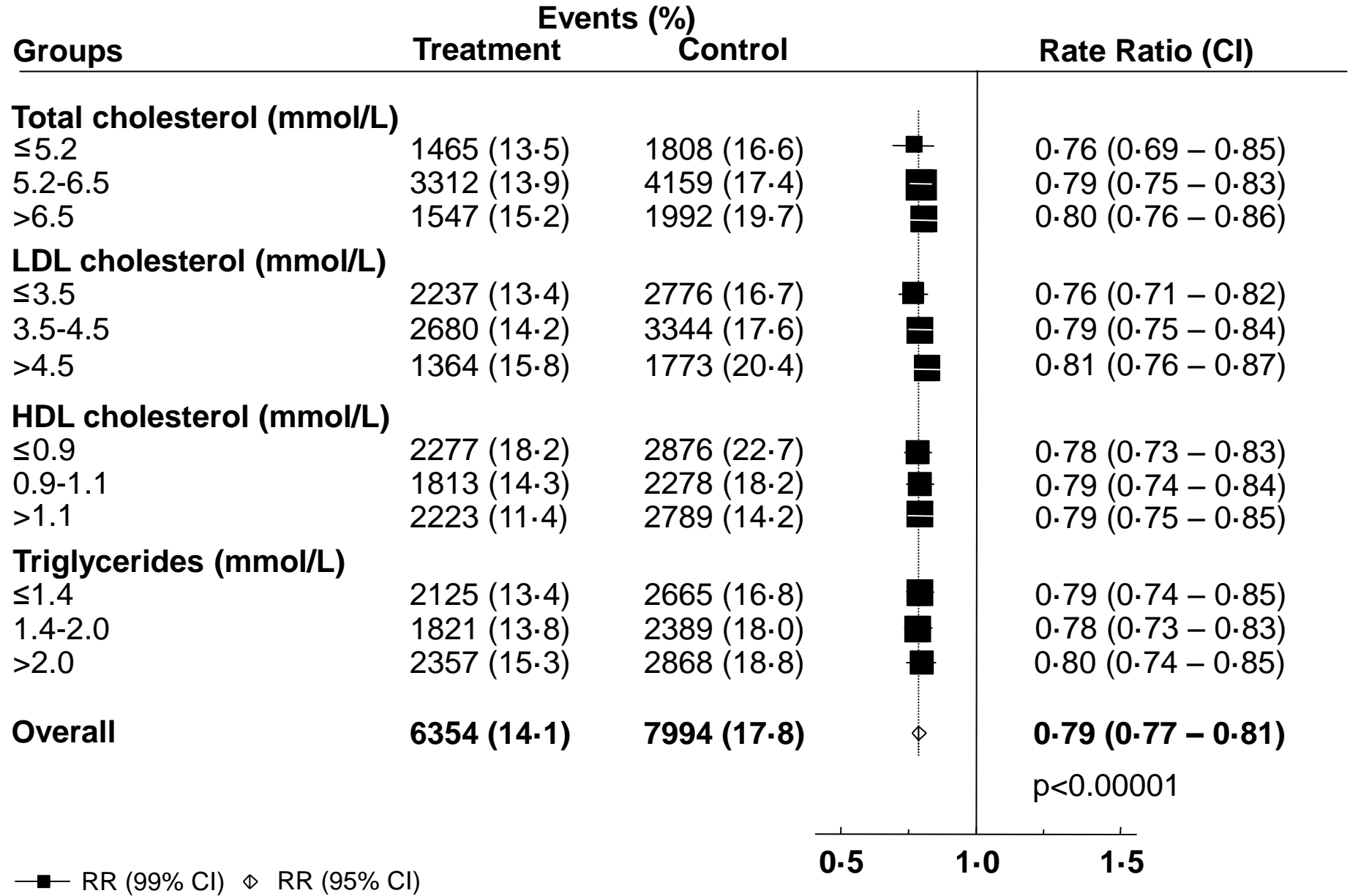


Effects on MAJOR VASCULAR EVENTS per mmol/L LDL cholesterol reduction, subdivided by baseline prognostic factors (1)

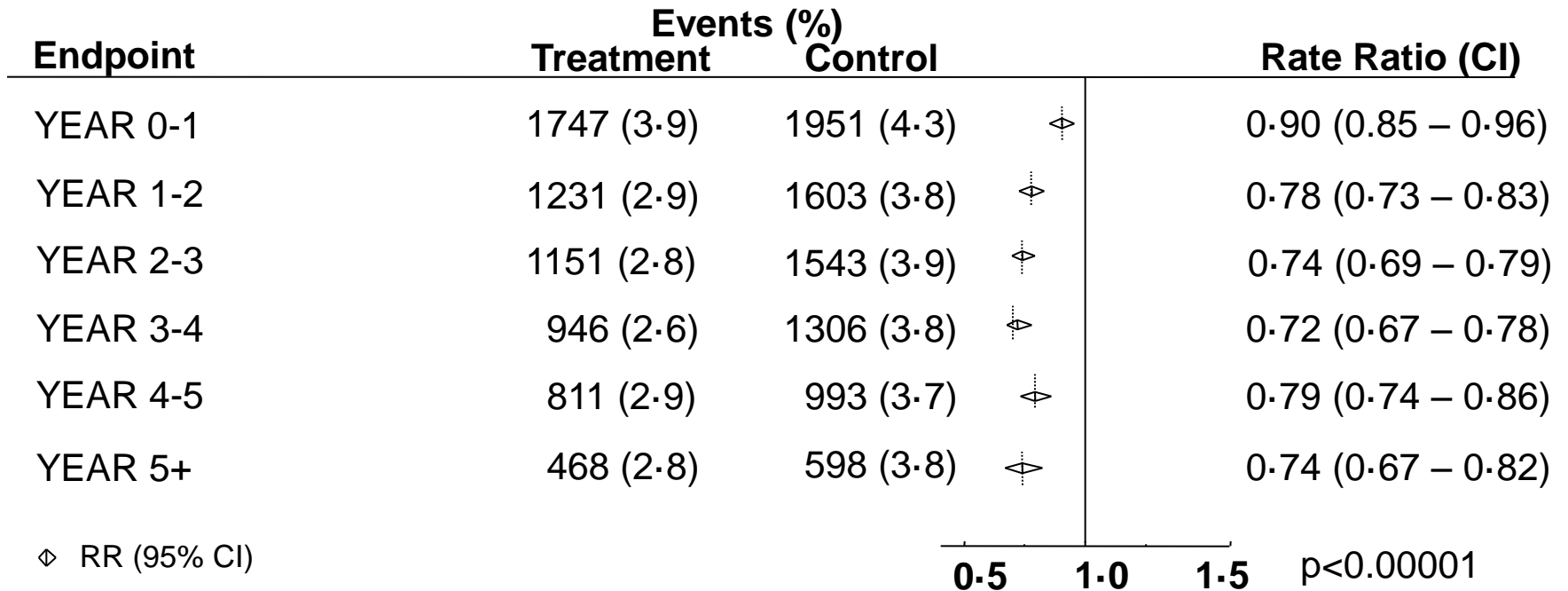
Groups	Events (%)		Rate Ratio (CI)
	Treatment	Control	
Prior disease			
Post MI	3051 (21.2)	3860 (26.9)	0.79 (0.75 – 0.83)
Other CHD	1257 (19.3)	1581 (24.2)	0.80 (0.73 – 0.87)
None	2046 (8.5)	2553 (10.6)	0.78 (0.72 – 0.84)
Age (years)			
≤65	3454 (12.5)	4448 (16.2)	0.78 (0.74 – 0.82)
>65	2900 (16.6)	3546 (20.3)	0.81 (0.77 – 0.86)
Gender			
Male	5097 (14.9)	6504 (19.0)	0.78 (0.75 – 0.81)
Female	1257 (11.7)	1490 (13.8)	0.83 (0.76 – 0.91)
Treated hypertension			
Yes	3925 (15.8)	4783 (19.2)	0.81 (0.77 – 0.85)
No	2429 (12.0)	3211 (15.9)	0.77 (0.73 – 0.82)
History of diabetes			
Yes	1465 (15.6)	1782 (19.2)	0.79 (0.72 – 0.86)
No	4889 (13.7)	6212 (17.4)	0.79 (0.76 – 0.82)
Diastolic blood pressure (mm Hg)			
≤90	5191 (14.9)	6493 (18.6)	0.79 (0.76 – 0.83)
>90	1154 (11.4)	1496 (14.8)	0.77 (0.80 – 0.84)
Overall	6354 (14.1)	7994 (17.8)	0.79 (0.77 – 0.81)



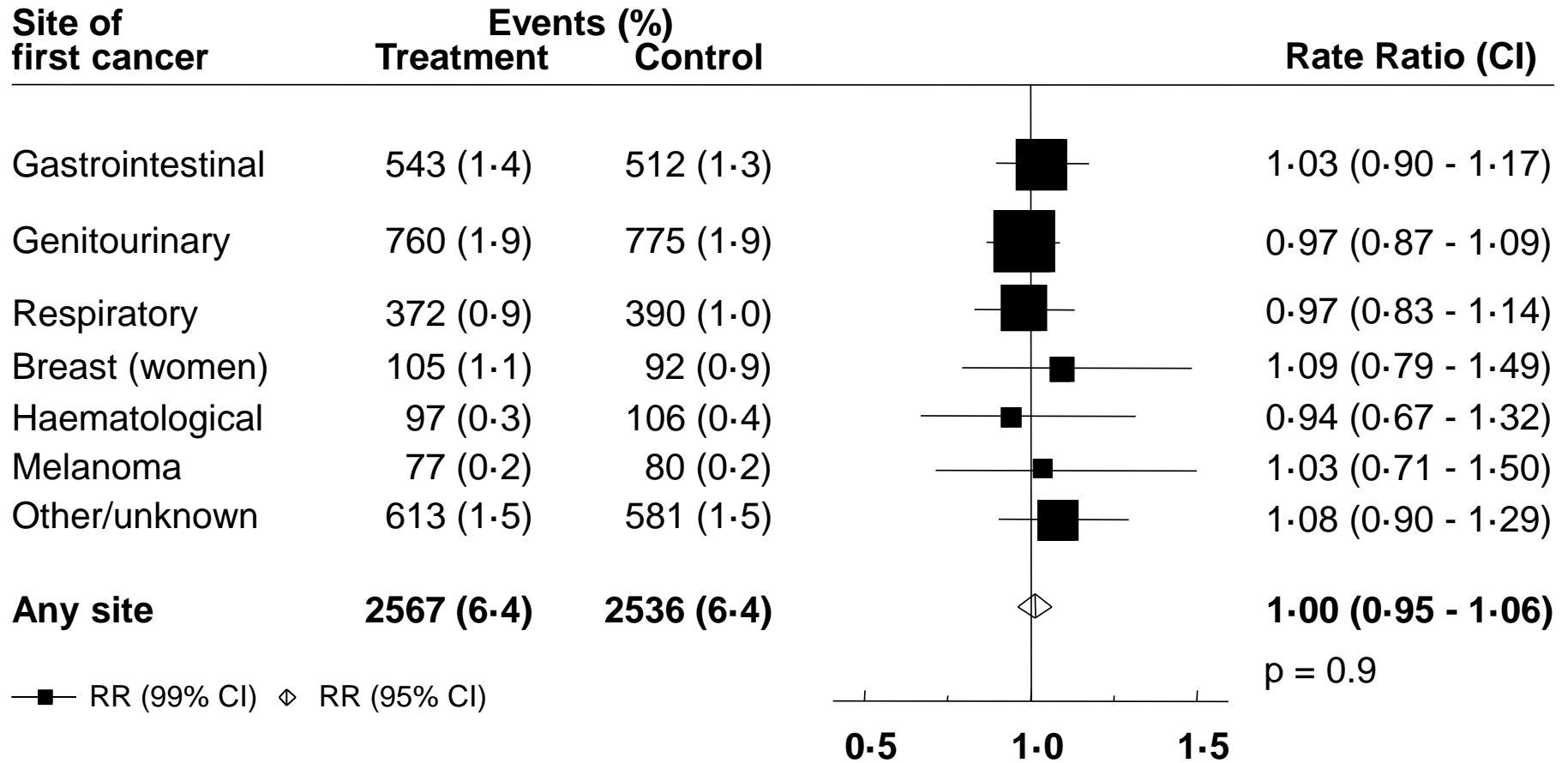
Effects on MAJOR VASCULAR EVENTS per mmol/L LDL cholesterol reduction, subdivided by baseline prognostic factors (2)



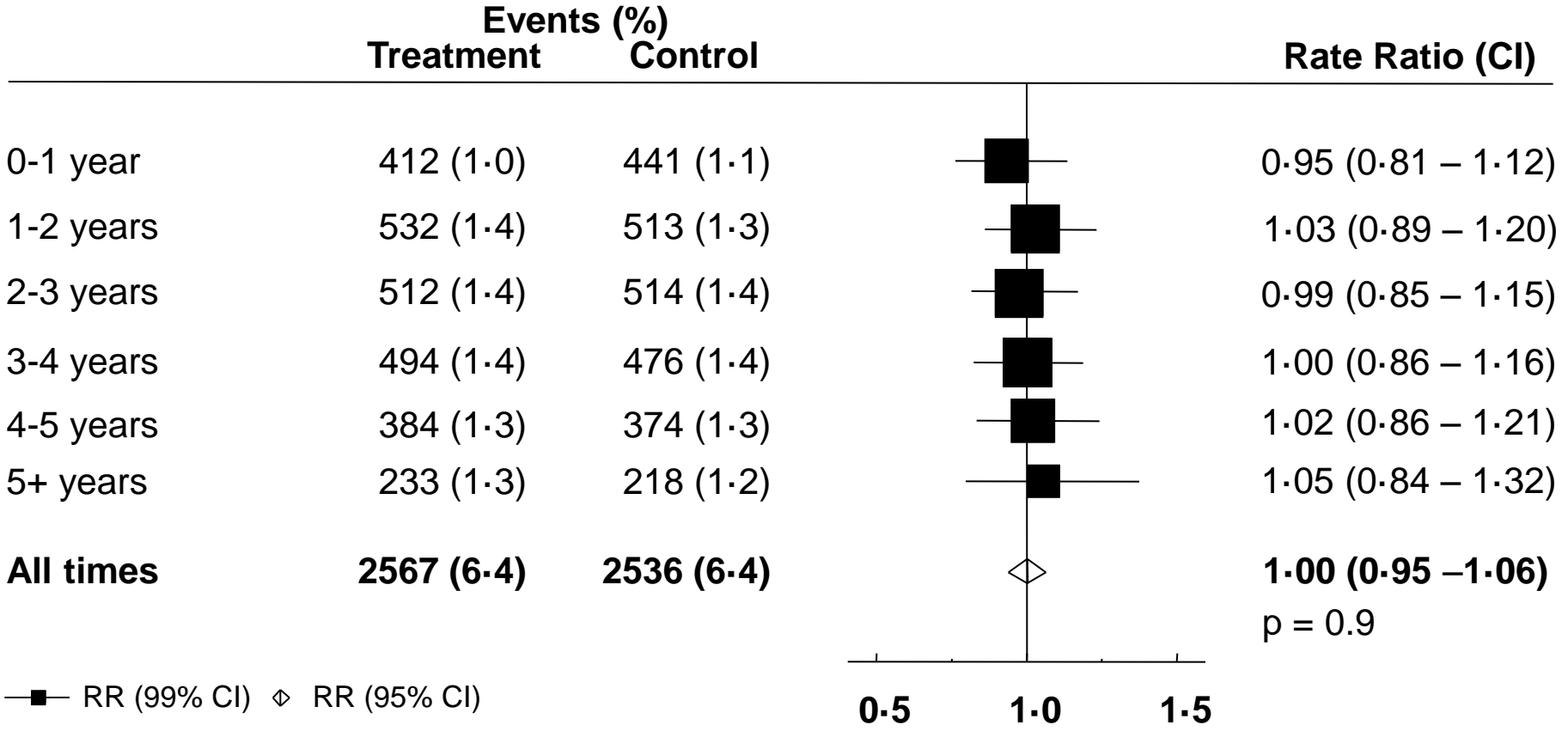
Effects on MAJOR VASCULAR EVENTS per mmol/L LDL cholesterol reduction, by year



Effects on CANCER incidence per mmol/L LDL cholesterol by site

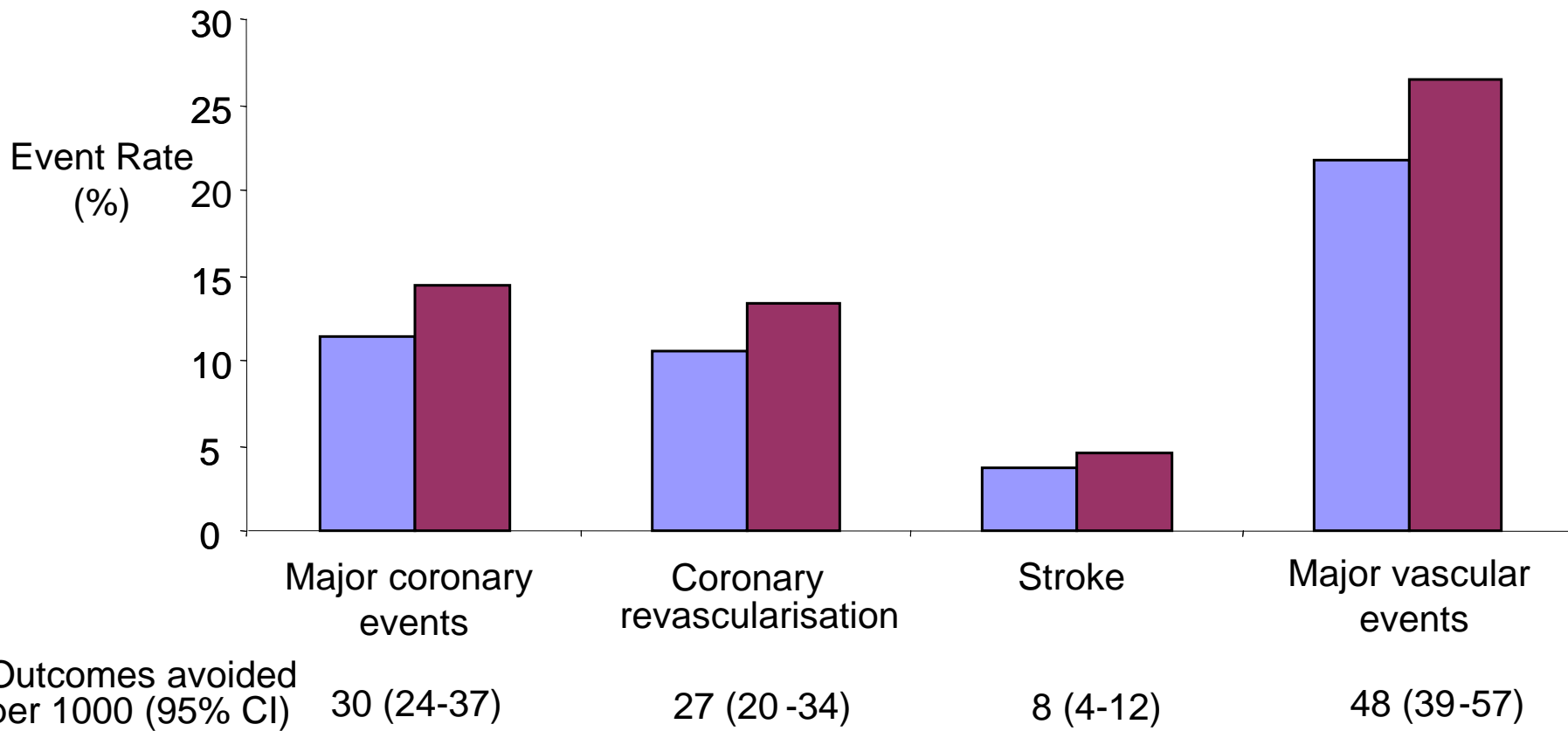


Effects on CANCER incidence per mmol/L LDL cholesterol by year

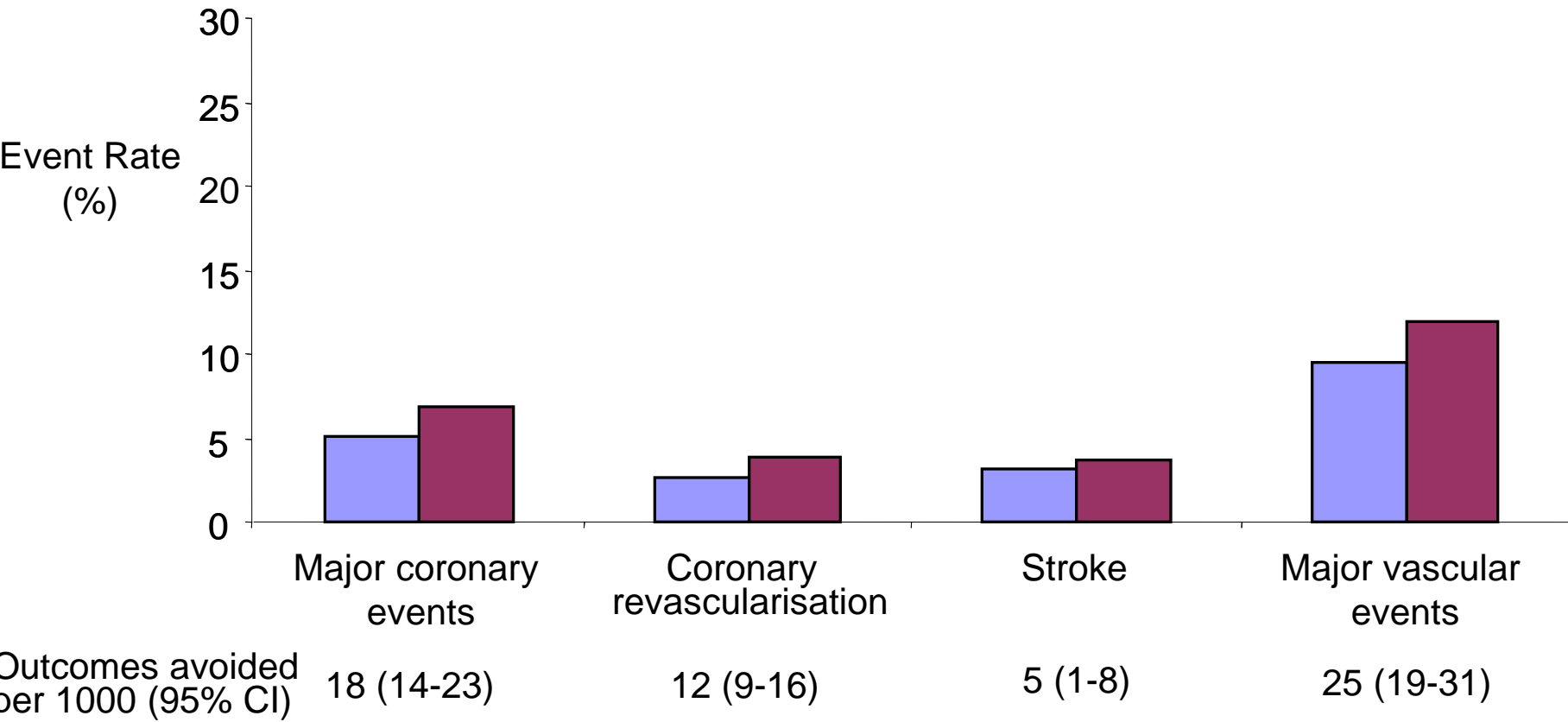


Additional Slides

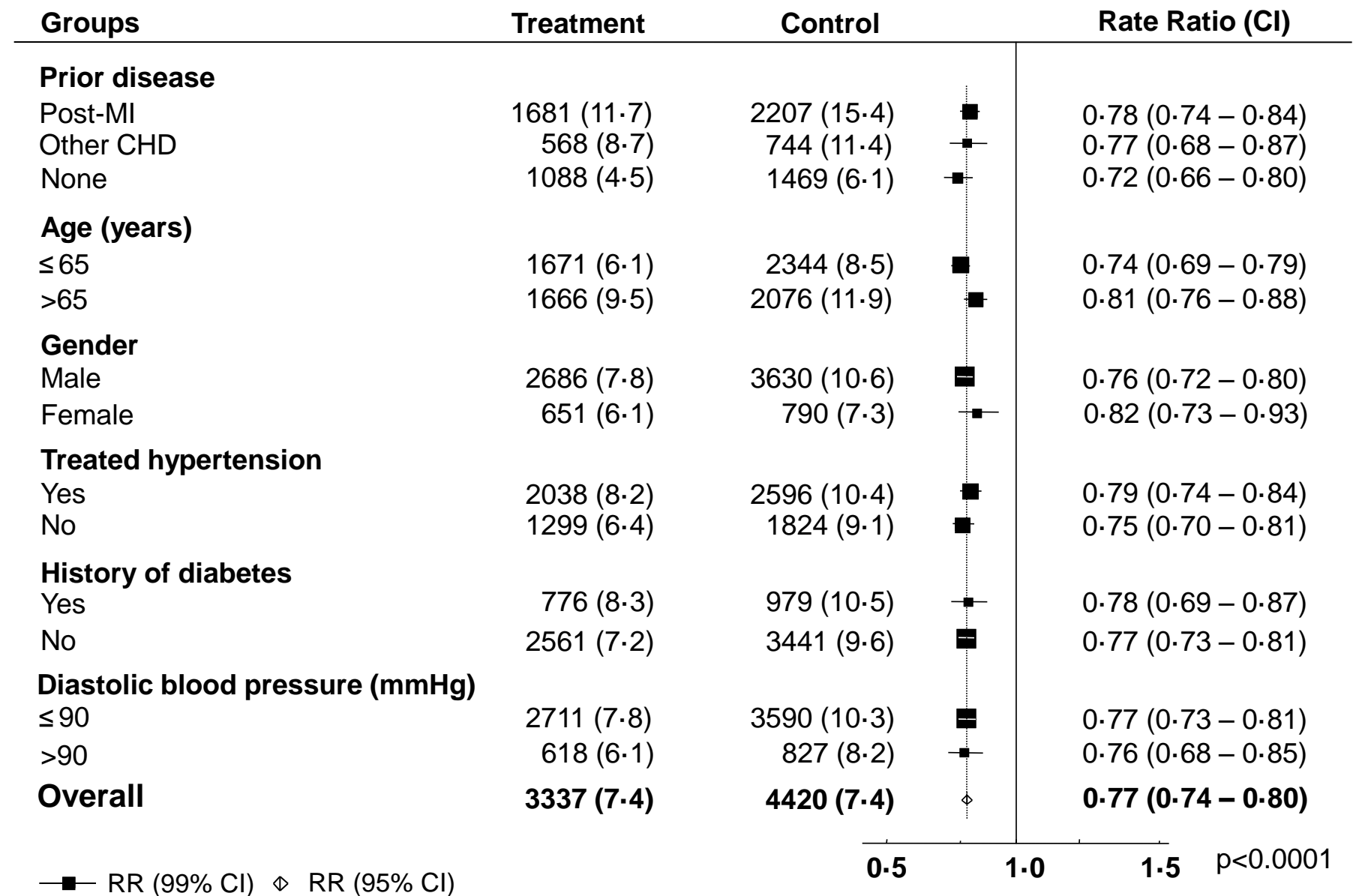
5 year absolute benefits on particular vascular outcomes per mmol/l LDL cholesterol reduction in participants WITH previous MI or CHD



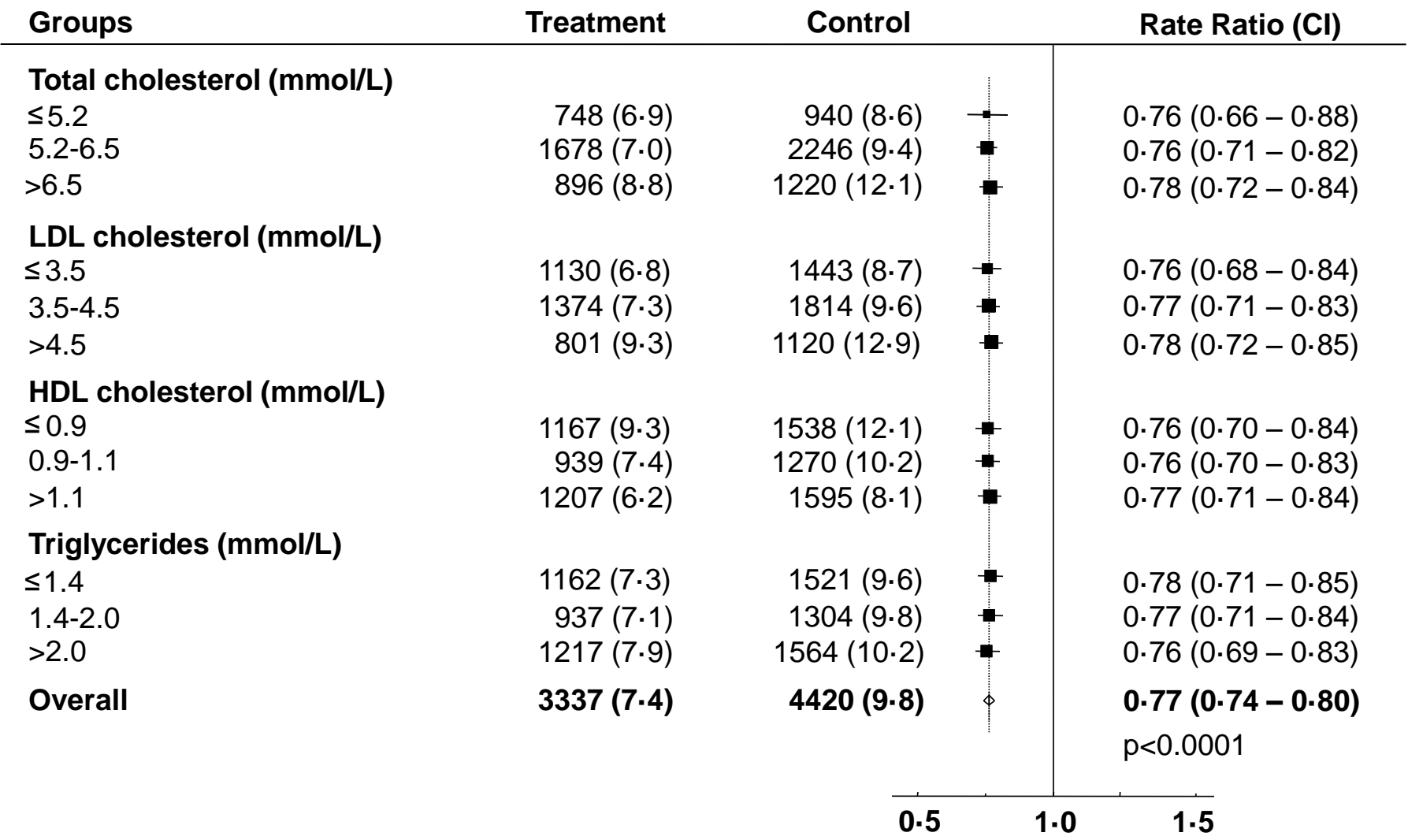
5 year absolute benefits on particular vascular outcomes per mmol/l LDL cholesterol reduction in participants WITHOUT previous MI or CHD



Effects on MAJOR CORONARY EVENTS per mmol/L LDL cholesterol reduction, subdivided by baseline prognostic factors (1)



Effects on MAJOR CORONARY EVENTS per mmol/L LDL cholesterol reduction, subdivided by baseline prognostic factors (2)



■ RR (99% CI) ◇ RR (95% CI)

p<0.0001