

**Amit Garg**



Dr. Amit Garg is the Associate Dean for Clinical Research, at the Schulich School of Medicine & Dentistry, Western University, London, Ontario, Canada. He is also a Professor of Medicine and Epidemiology & Biostatistics at Western University and an internationally recognized nephrologist and clinical scientist.

Dr. Garg serves as a staff nephrologist with London Health Sciences Centre, Scientist with the Lawson Health Research Institute, and Scientist with ICES. He is the Site Director of the ICES Western facility, and Program Lead for the ICES Kidney, Dialysis & Transplantation Provincial Research Program (KDT). In 2014, Dr. Garg was awarded the inaugural Dr. Adam Linton Chair in Kidney Health Analytics, and in 2021, he was awarded the Hellmuth Prize for

Achievement in Research, Western University's highest distinction for excellence in research. Dr. Garg is a Past President of the Canadian Society of Nephrology and the Past Medical Lead for the Enhance Access to Kidney Transplantation and Living Donation Project with the Ontario Renal Network.

Most of Dr. Garg's research and clinical work centers around ways to improve health outcomes for patients with chronic kidney disease and transplant. He has served as the primary investigator of several large randomized trials, and his research has resulted in the publication of more than 680 articles in influential journals.

**Louise Bowman**



Louise Bowman is Professor of Medicine and Clinical Trials at the Clinical Trial Service Unit of the University of Oxford. Her specialist clinical background is in Diabetes and Endocrinology. She has particular research interests in cardiovascular disease in diabetes, and maintains her clinical practice with regular specialist lipid clinics. She is Chief Investigator for the ORION-4 trial which will assess the effects of inclisiran on clinical outcomes among 15,000 people with atherosclerotic cardiovascular disease, and for the AMALFI trial, which will assess the value of screening for undiagnosed atrial fibrillation in 5000 high-risk individuals.

Through her work on large-scale trials in cardiovascular disease, she has developed a specialist interest in Clinical Trials Methodology and is Co-course Director of the Nuffield Department of Population Health MSc in Clinical Trials. Her focus is on the development, application and widespread promotion of methods to enhance the design and conduct of trials to ensure high quality outputs and reliable results at low cost.

**Pete Scarborough**



Pete's research focusses are population approached to improve nutrition and the relationship between public health and environmental sustainability. His nutrition research focuses on influences of food choice, including food price, food labelling, marketing of foods and food accessibility. Pete leads a research programme that develops scenario models to estimate the population-level health impact of changes in the prevalence of behavioural risk factors. This has led to the development of the Preventable Risk Integrated Model (PRIME), which has been used in several published analyses of the role of diet in health including estimates of the impact of health-related food taxation in the UK, Ireland and New Zealand; achieving dietary recommendations in the UK and Canada; and incorporating the cost of greenhouse gas emissions into food prices in the UK.

## Michelle O'Donoghue



Michelle O'Donoghue, MD, MPH, is an Associate Professor of Medicine at Harvard Medical School and a member of the Cardiovascular Division at Brigham and Women's Hospital. She is a Senior Investigator in the Thrombolysis in Myocardial Infarction (TIMI) Study Group, founded by Dr. Eugene Braunwald. In 2022, she received the inaugural McGillicuddy-Logue Distinguished Chair in women's cardiovascular health. Dr. O'Donoghue's primary research focus is the design and conduct of multicenter clinical trials for patients with stable and unstable coronary disease with a focus on the study of women and heart disease. Additional clinical research interests include the evaluation of novel antiplatelet drugs, established and novel biomarkers and the development of novel therapeutics in the management of atherosclerosis and diabetes mellitus.

Dr. O'Donoghue earned her medical degree from Columbia University College of Physicians and Surgeons in New York. She completed her residency in internal medicine and fellowship in cardiovascular medicine at Massachusetts General Hospital in Boston. She subsequently completed a Masters in Public Health degree at the Harvard School of Public Health.

## Marion Mafham



Marion Mafham is an Associate Professor at the Clinical Trial Service Unit and Epidemiological Studies at the University of Oxford. A nephrologist by training, she had worked for the last 10 years leading large randomised trials in diabetes and cardiovascular disease. She is the UK lead investigator for the 15,000 participant ORION-4 trial and co-principal investigator for the 20,000 participant ASCEND-PLUS trial assessing oral semaglutide in people with type 2 diabetes.

She specialises in developing streamlined clinical trial methods, particularly the use of healthcare systems data for trials. She leads the data linkage team for the RECOVERY trial of potential therapies in patients hospitalised with COVID-19 and co-leads the Health Data Research UK clinical trials programme.

## Aiden Doherty



Aiden is a Wellcome Trust Senior Research Fellow and Professor of Biomedical Informatics at the University of Oxford. His research group develops reproducible methods to analyse wearable sensor data in very large health studies to better understand the causes and consequences of disease. For example, they have developed methods to objectively measure physical activity in UK Biobank that are now actively used by researchers worldwide to demonstrate new, and more robust, associations with cardiovascular disease, depression, mood disorders, and others.

## Steven Nicholls



Steve Nicholls is the Program Director of MonashHeart and Intensive Care, Director of Victorian Heart Institute and Professor of Cardiology at Monash University. He is the Director of the Victorian Heart Hospital. He completed his cardiology training at John Hunter Hospital and PhD at the University of Adelaide, prior to holding a postdoctoral fellowship and faculty appointment at the Cleveland Clinic and the South Australian Health and Medical Research Institute. His research interests focus on the role of metabolic risk factors and imaging in atherosclerosis, with work spanning from early discovery to leadership of large clinical trials. He is President of the Cardiac Society of Australia and New Zealand, a lead investigator of the Australian Stroke and Heart Research Accelerator, Chair of the Asia Pacific Cardiometabolic Consortium and a Fellow of the Australian Academy of Health and Medical Sciences.

## David Preiss



David is an Associate Professor at the Nuffield Department of Population Health, University of Oxford, having joined CTSU in 2015. He was awarded the University of Glasgow's Bellahouston Medal for his PhD research and is a previous recipient of a Rising Star Fellowship from the European Foundation for the Study of Diabetes and the Royal College of Pathology's Research Medal for Clinical Biochemistry. He is a member of the NICE committee updating the guideline on cardiovascular disease risk assessment and reduction.

His major research interest is the prevention of cardiovascular and microvascular disease, with particular focus on lipid modification and diabetes. His current research combines clinical trials, epidemiological studies and meta-analyses of major studies. He is the Chief Investigator for the LENS trial (fenofibrate for diabetic eye disease), Clinical Coordinator for the ORION-4 trial (inclisiran for cardiovascular disease) and he jointly leads the ASCEND PLUS trial (oral semaglutide for the primary prevention for type 2 diabetes).

## Natalie Staplin



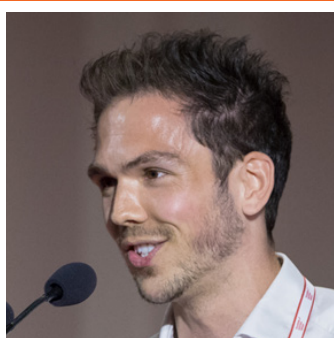
Associate Professor Natalie Staplin is a Senior Statistician within the Nuffield Department of Population Health at the University of Oxford. She has worked on several randomised trials conducted by the department, including SHARP, UK HARP-III and 3C. She is the trial statistician for EMPA-KIDNEY and ASCEND-PLUS, and DMC statistician for RECOVERY, ORION-4 and LENS. Her other research interests include epidemiological analyses (both conventional and genetic) of patients with chronic kidney disease, using appropriate statistical methodology to identify risk factors associated with both cardiovascular events and progression to end-stage kidney disease.

## Morris Brown



Morris Brown is Professor of Endocrine Hypertension at the William Harvey Research Institute of Barts and the London, Queen Mary University London, and formerly the foundation Professor of Clinical Pharmacology in the University of Cambridge. His rotational crossover trials led to the AB/CD rule for Hypertension, and, in the BHF/BHS PATHWAY trials, to validation of spironolactone for resistant hypertension. His current interest is the translation of molecular mechanisms in Primary Aldosteronism, leading to non-invasive techniques (PET CT, endoscopic ablation) for the cure of hypertension. Papers in Nature Genetics (2013, 2021, 2023), Nature Medicine (2022), N Engl J Med (2015, 2022) and Lancet (2015) report the discoveries of somatic mutations causing aldosterone-producing adenomas, the clinical and molecular differences among the mutations and patients, and the overlap between primary aldosteronism and resistant hypertension. Awards include the Lilly Gold Medal of the British Pharmacological Society (2002), the Walter Somerville Medal of the British Cardiac Society (2006), the RCP/Lancet award (2016), and International Society of Hypertension's Robert Tigerstedt Lifetime Achievement award in 2018.

## John Burn-Murdoch



John Burn-Murdoch is a columnist and the chief data reporter for the Financial Times. For much of the last three years he led the FT's data-driven coverage of the Covid-19 pandemic and, as of April 2022, he also writes the FT's weekly Data Points column, which covers everything from economics, to politics, healthcare, social attitudes, climate change, economics and sport. He is a visiting senior fellow at the London School of Economics' Data Science Institute, where he is also a guest lecturer.

