

**MORTALITY FROM SMOKING
IN DEVELOPED COUNTRIES
1950–2000**

**(2nd edition, revised June 2006:
www.deathsfromsmoking.net)**

**Richard Peto, Alan D Lopez,
Jillian Boreham and Michael Thun**

EU25

(European Union – 25 countries*)

Raw data (pages 38–39, 40–41)

Analyses (pages 42–43, 44–45, 46–47)

Appendix (pages 48–49)

*Austria, Belgium, Cyprus, Czech Republic, Denmark, Estonia, Finland, France, Germany, Greece, Hungary, Ireland, Italy, Latvia, Lithuania, Luxembourg, Malta, Netherlands, Poland, Portugal, Slovakia, Slovenia, Spain, Sweden, UK

EU25 (European Union - 25 countries*): 2000

		No. of deaths (Source: WHO)			Standardised rates (defined overleaf)			Annual death rates / 100,000 (zero denoted by -)						
		All ages	0-34	35-69	All ages	0-34	35-69	0-4	5-9	10-14	15-19	20-24	25-29	30-34
ALL CAUSES	M	2214295	85395	779132	896.5	80.8	928.9	136.8	15.7	18.7	65.7	101.1	105.6	122.3
	F	2237793	38648	397217	542.2	39.8	438.0	111.0	11.4	12.9	27.9	31.8	34.5	49.1
Tuberculosis	M	4433	124	2187	1.8	0.1	2.4	0.0	0.0	0.0	0.0	0.1	0.2	0.4
	F	2256	64	557	0.6	0.1	0.6	0.0	0.0	-	0.0	0.1	0.2	0.1
HIV	M	4798	1203	3498	2.0	1.0	3.2	0.1	0.0	0.0	0.1	0.5	1.9	4.5
	F	1167	424	715	0.5	0.4	0.6	0.1	0.0	0.0	0.0	0.2	0.7	1.5
Other infective and parasitic	M	17145	1118	6070	7.0	1.1	7.1	4.2	0.3	0.4	0.6	0.6	0.8	1.2
	F	19138	840	3712	4.9	0.9	4.1	3.6	0.4	0.4	0.6	0.5	0.4	0.6
ALL CANCER	M	625672	6596	276498	252.6	6.1	338.3	3.4	3.6	3.2	5.5	6.2	8.3	12.2
	F	492963	5728	180930	141.9	5.3	198.5	2.8	2.7	2.8	3.4	4.5	7.1	14.0
Mouth and pharynx cancer	M	19323	120	14023	8.3	0.1	16.0	0.0	0.0	0.0	0.1	0.2	0.2	0.3
	F	5400	57	2558	1.7	0.1	2.7	0.0	0.0	0.0	0.0	0.0	0.1	0.2
Oesophagus cancer	M	19642	43	11450	8.1	0.0	13.7	-	-	-	-	0.0	0.1	0.2
	F	6634	16	2086	1.8	0.0	2.3	-	-	-	-	0.0	0.0	0.1
Stomach cancer	M	38320	206	15872	15.4	0.2	19.5	-	-	-	0.0	0.1	0.3	0.8
	F	27163	180	7486	7.2	0.2	8.3	-	-	0.0	0.0	0.1	0.3	0.6
Colorectal cancer	M	68265	237	26660	27.3	0.2	33.3	0.0	-	-	0.1	0.2	0.4	0.8
	F	64824	227	17481	17.0	0.2	19.6	-	-	0.0	0.1	0.2	0.3	0.8
Liver cancer	M	19034	110	8962	7.6	0.1	11.2	0.1	0.0	0.0	0.1	0.1	0.2	0.2
	F	8897	53	2618	2.4	0.1	3.0	0.1	0.0	0.0	0.0	0.1	0.1	0.1
Pancreas cancer	M	27965	91	13723	11.4	0.1	16.8	-	-	-	0.0	0.0	0.1	0.4
	F	28431	41	8729	7.7	0.0	9.9	-	-	0.0	-	0.0	0.0	0.1
Larynx cancer	M	11593	14	7112	4.8	0.0	8.4	-	-	0.0	-	0.0	0.0	0.1
	F	1191	2	575	0.4	0.0	0.6	-	-	-	-	-	-	0.0
Lung cancer	M	170912	228	87305	69.2	0.2	107.7	0.0	0.0	0.0	0.0	0.1	0.3	0.9
	F	53102	146	23758	16.3	0.1	26.2	0.0	0.0	0.0	0.0	0.1	0.3	0.5
Malignant melanoma	M	6059	271	3477	2.5	0.2	4.0	0.0	0.0	0.0	0.1	0.2	0.5	0.8
	F	5399	188	2538	1.7	0.2	2.7	0.0	0.0	0.0	0.1	0.2	0.4	0.5
Female breast cancer	F	85253	753	41911	27.0	0.6	44.8	-	0.0	0.0	-	0.1	0.7	3.6
Cervix cancer	F	9757	299	5880	3.4	0.3	6.0	-	-	-	-	0.1	0.5	1.2
Other uterine cancer	F	15491	48	5545	4.4	0.0	6.2	-	-	0.0	0.0	0.0	0.1	0.2
Ovarian cancer	F	27437	231	13021	8.6	0.2	14.3	-	0.0	0.0	0.1	0.2	0.4	0.7
Prostate cancer	M	63056	9	11142	24.6	0.0	14.8	-	0.0	-	0.0	0.0	-	0.0
Bladder cancer	M	25285	25	7424	10.0	0.0	9.5	0.0	0.0	-	-	0.0	0.0	0.1
	F	9413	14	1685	2.3	0.0	1.9	-	0.0	-	0.0	-	-	0.1
Other and ill-defined cancer sites	M	111443	3124	51117	45.3	2.9	61.5	2.0	2.2	1.6	2.7	3.0	3.9	4.9
	F	103465	2038	32488	28.7	2.0	36.0	1.6	1.7	1.7	1.7	1.7	2.2	3.2
Hodgkin's disease	M	1627	229	853	0.7	0.2	0.9	-	0.0	0.0	0.2	0.3	0.4	0.4
	F	1329	201	518	0.4	0.2	0.5	0.0	0.0	0.1	0.2	0.4	0.4	0.3
Myeloma and non-Hodgkin lymphomas	M	24066	547	10347	9.7	0.5	12.6	0.2	0.2	0.3	0.4	0.6	0.7	1.0
	F	23494	321	7305	6.5	0.3	8.2	0.1	0.1	0.1	0.2	0.4	0.5	0.6
Leukaemia	M	19082	1342	7031	7.7	1.3	8.5	1.0	1.1	1.2	1.8	1.3	1.2	1.4
	F	16283	913	4748	4.6	0.9	5.2	0.9	0.8	0.7	0.9	0.8	1.0	1.2
Diabetes	M	36717	255	11703	14.6	0.2	14.5	0.0	0.0	0.0	0.1	0.2	0.4	0.8
	F	54317	167	7921	12.5	0.1	9.1	0.0	0.0	0.0	0.1	0.1	0.2	0.5
ALL VASCULAR DISEASE	M	845516	4884	243631	337.1	4.4	299.0	2.8	0.7	1.1	2.5	4.5	6.9	12.0
	F	1027530	2528	101287	223.5	2.4	115.2	2.6	0.4	0.9	1.4	2.1	3.6	5.6
Rheumatic heart disease and fever	M	4114	74	1683	1.7	0.1	2.1	0.0	0.0	0.0	0.0	0.1	0.1	0.2
	F	8667	48	2094	2.2	0.0	2.4	0.0	-	0.1	0.0	0.1	0.1	0.1
Hypertensive disease	M	27723	71	7752	11.1	0.1	9.6	0.0	0.0	0.0	0.0	0.1	0.1	0.2
	F	50472	34	4667	10.9	0.0	5.3	0.0	-	0.0	-	0.0	0.0	0.1
Ischaemic heart disease	M	377585	1020	129500	151.0	0.9	158.7	0.1	-	0.0	0.2	0.6	1.5	3.7
	F	346532	237	39517	76.8	0.2	45.4	0.1	0.0	0.0	0.0	0.1	0.4	0.8
Pulmonary embolism and other venous	M	17584	230	6365	7.0	0.2	7.7	0.0	0.0	0.0	0.1	0.2	0.3	0.7
	F	27084	290	5093	6.6	0.3	5.6	0.0	0.0	0.0	0.2	0.4	0.4	0.7
Cerebrovascular disease	M	190156	1006	42760	75.2	0.9	53.1	0.5	0.2	0.4	0.4	1.0	1.4	2.3
	F	287472	759	27126	62.3	0.7	30.6	0.4	0.1	0.3	0.3	0.6	1.2	2.0
Other vascular disease	M	228354	2483	55571	91.1	2.3	67.8	2.1	0.4	0.7	1.7	2.6	3.4	4.9
	F	307303	1160	22790	64.7	1.1	25.8	2.1	0.3	0.5	0.8	1.0	1.4	2.0
Chronic obstructive pulmonary disease	M	89551	344	19118	35.1	0.3	24.7	0.3	0.1	0.2	0.3	0.4	0.3	0.6
	F	54744	236	9115	13.0	0.2	10.4	0.1	0.1	0.2	0.3	0.2	0.3	0.4
Other respiratory disease	M	105739	1613	18514	42.1	1.6	22.7	4.0	0.4	0.4	0.9	1.4	1.7	2.3
	F	124405	922	9199	26.3	1.0	10.3	2.7	0.4	0.4	0.6	0.7	0.8	1.1
Peptic ulcer	M	8935	63	3134	3.6	0.1	3.7	0.0	0.0	0.0	0.0	0.0	0.1	0.2
	F	9405	36	1318	2.2	0.0	1.5	0.0	0.0	0.0	0.0	0.0	0.0	0.1
Liver cirrhosis	M	49505	836	36867	21.1	0.7	41.3	0.0	0.0	0.0	0.0	0.1	0.9	3.7
	F	24275	366	14429	8.3	0.3	15.3	0.0	0.0	0.0	0.0	0.1	0.5	1.5
Renal disease	M	20926	192	4675	8.3	0.2	5.8	0.3	0.0	0.0	0.1	0.1	0.3	0.3
	F	23345	196	3293	5.4	0.2	3.7	0.3	0.1	0.0	0.1	0.2	0.3	0.3
Pregnancy, birth	F	272	187	85	0.1	0.2	0.1	-	-	-	0.1	0.2	0.4	0.5
Congenital and perinatal causes	M	13410	11843	1114	8.2	13.6	1.2	89.0	1.2	1.0	1.1	1.0	1.1	0.9
	F	11082	9402	1062	6.9	11.4	1.1	74.0	1.1	1.0	1.1	0.8	0.6	0.9
Ill-defined causes	M	70021	5582	26499	29.2	5.4	29.6	12.6	0.6	0.6	2.7	5.5	6.9	8.5
	F	87017	2332	9392	19.6	2.5	10.1	9.3	0.4	0.4	1.1	1.8	1.8	2.5
Other medical causes	M	167463	7969	50807	67.8	7.5	58.6	10.2	2.8	2.9	5.3	7.9	10.0	13.2
	F	224880	4330	30822	52.2	4.4	33.8	8.3	2.5	2.5	3.4	4.0	4.2	5.7
ALL NON-MEDICAL CAUSES	M	154464	42773	74817	65.9	38.7	77.0	9.8	6.0	8.8	46.4	72.7	65.8	61.4
	F	80997	10890	23380	24.4	10.5	23.8	7.2	3.2	4.3	15.6	16.3	13.2	13.7
Road traffic accidents	M	38906	18093	15975	16.9	16.5	16.2	2.1	2.5	4.0	25.7	35.6	26.2	19.3
	F	12879	4787	4899	5.0	4.6	4.9	1.6	1.5	2.3	8.9	8.6	5.4	4.2
Fire	M	2523	498	1402	1.1	0.5	1.5	0.6	0.4	0.2	0.3	0.5	0.5	0.8
	F	1417	198	503	0.5	0.2	0.5	0.5	0.2	0.1	0.1	0.2	0.1	0.2
Suicide	M	44091	10474	25787	18.8	9.2	26.2	-	0.0	1.2	8.6	16.7	18.1	19.9
	F	14270	2382	8262	5.4	2.2	8.3	-	-	0.4	2.9	3.1	3.9	4.9
Homicide	M	3917	1514	2172	1.7	1.4	2.1	0.9	0.4	0.2	1.0	2.2	2.5	

2000: EU25 (European Union - 25 countries)

Annual death rates / 100,000 (zero denoted by -)										9th ICD/10th ICD categories		
35-39	40-44	45-49	50-54	55-59	60-64	65-69	70-74	75-79	80+/NK			
171.7	280.6	443.9	653.3	978.6	1535.1	2439.1	3807.2	6073.5	13919.0	M	ALL CAUSES	001-999/A00-Y89
78.8	132.3	213.7	313.6	460.6	707.0	1160.2	1986.1	3567.5	11480.2	F		
0.9	1.5	2.0	2.4	2.6	3.4	4.2	6.8	11.3	18.5	M	Tuberculosis	010-018, 137/ A15-A19, B90
0.2	0.3	0.5	0.4	0.5	0.9	1.4	2.8	4.9	8.0	F		
7.1	5.5	3.3	2.1	1.8	1.5	1.2	0.7	0.4	0.3	M	HIV	279.5, 279.6/B20-B24
1.8	1.1	0.6	0.3	0.2	0.2	0.2	0.1	0.1	0.0	F		
2.0	2.5	3.7	5.1	7.0	11.3	18.4	29.4	45.4	99.7	M	Other infective and parasitic	Rest of 001-139/rest of A00-B99 excl A33,A34
1.0	1.3	1.7	2.4	4.0	6.8	11.6	19.1	32.1	87.0	F		
23.1	56.5	124.8	229.2	382.3	612.2	939.8	1324.5	1792.7	2626.6	M	ALL CANCER	140-208/C00-C97
29.1	59.3	103.4	162.0	237.7	332.5	465.1	644.1	877.7	1403.7	F		
1.2	5.0	12.2	18.6	23.0	25.2	26.7	25.9	26.2	30.8	M	Mouth and pharynx cancer	140-149/C00-C14
0.3	1.1	2.1	2.9	3.8	4.2	4.8	5.5	7.1	13.9	F		
0.7	2.5	6.5	12.2	18.6	24.5	30.6	36.8	43.4	52.7	M	Oesophagus cancer	150/C15
0.1	0.4	1.0	1.8	3.0	4.3	5.7	8.6	12.1	22.6	F		
1.5	3.6	6.8	12.2	20.2	35.4	56.8	84.0	116.4	173.9	M	Stomach cancer	151/C16
1.5	2.6	3.8	5.6	8.2	13.5	22.8	35.0	51.3	99.4	F		
1.7	4.1	9.0	18.5	35.5	62.0	102.2	149.1	216.4	335.6	M	Colorectal cancer	153, 154/C18-C21
1.7	3.8	7.4	13.1	22.5	35.0	53.6	81.3	125.2	242.5	F		
0.5	1.3	3.0	6.4	11.3	21.2	34.7	46.7	57.0	56.8	M	Liver cancer	155.0/C22 excl C221
0.3	0.5	1.1	1.6	3.0	5.1	9.2	14.9	19.5	25.3	F		
0.9	2.7	5.8	11.4	21.0	31.5	44.1	59.6	76.1	97.9	M	Pancreas cancer	157/C25
0.5	1.2	3.3	6.2	11.5	18.8	27.6	41.6	60.2	86.5	F		
0.4	1.7	4.5	8.0	11.1	14.4	18.9	20.9	24.0	27.5	M	Larynx cancer	161/C32
0.0	0.2	0.4	0.7	0.9	0.9	1.2	1.7	1.7	2.5	F		
3.5	13.6	35.8	71.3	125.3	200.1	304.2	402.9	468.8	464.4	M	Lung cancer	162/C33, C34
2.0	6.8	13.8	21.9	33.1	43.7	61.9	83.0	96.5	100.7	F		
1.2	1.7	2.6	3.6	4.8	5.9	7.9	10.2	11.3	16.5	M	Malignant melanoma	172/C43
0.9	1.6	1.9	2.7	3.1	3.7	4.8	6.1	7.5	12.0	F		
9.1	18.1	30.6	46.2	59.9	70.6	79.4	94.8	119.4	192.2	F	Female breast cancer	174/C50
2.9	5.0	6.3	6.2	6.1	7.2	8.3	9.7	11.2	13.3	F	Cervix cancer	180/C53
0.6	1.3	2.4	4.3	7.1	11.1	16.6	22.6	29.3	42.7	F	Other uterine cancer	179, 182/C54, C55
1.4	3.6	7.3	12.5	18.8	25.3	31.2	37.6	44.8	53.5	F	Ovarian cancer	183/C56, C570-C574
0.1	0.2	0.9	3.3	9.9	28.1	61.0	119.7	237.2	576.1	M	Prostate cancer	185/C61
0.2	0.7	1.9	4.4	8.5	17.7	33.1	57.0	89.0	162.2	M	Bladder cancer	188/C67
0.1	0.3	0.7	1.0	1.8	3.7	5.9	11.1	18.3	43.9	F		
7.3	13.9	27.3	45.5	69.5	107.5	159.3	221.4	296.9	441.1	M	Other and ill-defined cancer sites	Rest of 140-199/ rest of C00-C80, C97
5.1	9.3	15.5	26.3	40.3	61.4	94.1	134.2	192.6	331.1	F		
0.5	0.6	0.7	0.7	1.0	1.4	1.8	2.2	3.2	3.6	M	Hodgkin's disease	201/C81
0.3	0.3	0.3	0.5	0.5	0.8	1.2	1.5	2.0	2.3	F		
1.8	2.6	4.5	8.0	13.9	22.7	34.4	50.7	72.2	97.4	M	Myeloma and non- Hodgkin lymphomas	200, 202-203/ C82-C90, C96
1.0	1.7	2.8	5.2	8.9	14.4	23.5	34.9	49.3	67.8	F	Leukaemia	204-208/C91-C95
1.7	2.3	3.3	5.0	8.7	14.5	24.0	37.6	54.5	90.2	M		
1.1	1.8	2.6	3.5	5.3	8.9	13.3	19.9	29.8	51.7	F		
1.4	2.7	4.7	8.2	14.2	24.9	45.4	73.4	119.0	240.2	M	Diabetes	250/E10-E14
0.8	1.1	1.9	3.7	7.5	15.5	33.4	59.6	107.2	272.0	F		
25.6	59.6	113.5	187.7	301.3	513.1	892.2	1510.7	2580.7	6575.4	M	ALL VASCULAR DISEASE	390-459/I00-I99
10.4	20.4	36.2	58.4	96.9	191.8	392.3	813.3	1682.0	6220.8	F		
0.2	0.5	0.8	1.3	2.2	3.5	5.9	8.6	12.2	19.1	M	Rheumatic heart disease and fever	390-398/I00-I09
0.2	0.3	0.6	1.1	2.4	4.4	7.8	12.0	19.0	31.4	F		
0.5	1.6	3.4	5.8	10.1	16.7	28.9	46.0	83.0	230.1	M	Hypertensive disease	401-405/I10-I15
0.2	0.6	1.3	2.9	4.9	9.0	18.5	38.0	80.4	313.2	F		
10.9	29.7	60.3	104.1	168.8	276.9	460.4	732.3	1148.8	2443.5	M	Ischaemic heart disease	410-414/I20-I25
2.3	5.7	11.6	19.5	36.9	78.9	163.2	323.5	627.1	1951.9	F		
1.2	2.4	3.5	5.0	7.6	12.6	21.4	32.0	53.6	106.8	M	Pulmonary embolism and other venous	415.1, 451-453/ I26, I80-I82
1.0	1.6	2.7	3.6	5.5	9.2	16.0	28.4	50.3	127.3	F		
4.5	9.6	18.3	29.2	48.3	89.3	172.7	327.2	629.8	1689.0	M	Cerebrovascular disease	430-438/I60-I69
3.6	6.8	11.5	17.6	25.7	48.0	100.8	222.7	487.5	1741.1	F		
8.3	15.9	27.2	42.3	64.3	114.1	202.8	364.6	653.3	2086.9	M	Other vascular disease	Rest of 390-459/ rest of I00-I99
3.1	5.4	8.5	13.7	21.5	42.3	86.1	188.7	417.6	2056.0	F		
0.9	2.1	4.2	8.7	20.4	44.2	92.1	184.1	331.2	726.8	M	Chronic obstructive pulmonary disease	490-496/ J40-J47, J67
0.7	1.2	2.6	5.4	10.0	17.6	35.7	66.5	109.4	255.4	F		
3.5	6.0	8.5	12.8	20.0	36.9	70.8	143.4	308.7	1140.1	M	Other respiratory disease	Rest of 460-519/ rest of J00-J98
1.9	2.7	4.1	5.9	9.5	16.1	31.8	67.3	156.3	848.8	F		
0.4	1.2	2.1	3.0	3.9	6.1	9.2	14.7	26.0	61.6	M	Peptic ulcer	531-533/K25-K27
0.2	0.4	0.6	1.0	1.3	2.3	4.5	8.4	16.9	51.0	F		
9.7	21.5	33.6	40.9	51.9	63.1	68.2	65.1	62.7	56.5	M	Liver cirrhosis	571/K70, K74
3.9	7.4	12.2	15.7	19.5	23.0	25.2	28.8	32.2	30.1	F		
0.6	1.2	2.1	3.3	5.4	9.5	18.1	33.9	64.5	194.2	M	Renal disease	580-590/N00-N19
0.4	0.7	1.2	1.9	3.2	6.2	12.4	21.3	40.2	126.3	F		
0.4	0.1	0.0	0.0	-	-	-	-	-	-	F	Pregnancy, birth	630-676/A34,000-099
0.9	0.9	1.1	1.3	1.5	1.3	1.2	1.5	2.6	3.5	M	Congenital and perinatal causes	740-779/A33, P00-P96, Q00-Q99
0.8	0.8	0.9	1.2	1.5	1.2	1.2	1.4	1.6	2.9	F	Ill-defined causes	780-799/R00-R99
11.6	17.1	23.0	26.3	31.8	42.0	55.1	75.4	119.8	505.7	M		
3.2	4.7	7.1	8.0	10.2	14.6	22.7	39.5	79.2	585.0	F		
18.0	26.9	36.5	45.2	59.7	86.9	137.1	235.5	452.1	1285.1	M	Other medical causes	Rest of 001-799/ rest of A00-R99
7.8	11.8	17.8	24.5	34.3	51.5	88.5	164.0	342.1	1283.7	F		
66.0	75.4	80.7	77.1	74.8	78.9	86.1	108.1	156.3	384.8	M	ALL NON- MEDICAL CAUSES	E800-E999/V01-Y89
16.2	18.9	22.8	22.8	24.4	26.9	34.3	49.7	85.7	305.5	F		
16.9	16.4	16.6	15.7	15.0	15.7	17.3	20.3	26.4	33.2	M	Road traffic accidents	E810-E819, E826-E829/ part of V01-V99, Y850
4.0	4.3	4.5	4.5	4.7	5.4	7.2	8.7	10.8	11.2	F		
1.0	1.4	1.6	1.5	1.5	1.6	1.6	2.0	3.0	5.9	M	Fire	E890-E899/X00-X09
0.3	0.4	0.5	0.5	0.6	0.6	0.7	1.1	2.0	3.8	F		
23.4	28.2	29.4	26.7	25.2	24.7	25.7	30.4	38.3	63.1	M	Suicide	E950-E959/X60-X84
6.2	7.3	9.4	8.4	8.8	8.9	8.9	10.2	11.1	13.4	F		
2.5	2.7	2.7	2.1	1.9	1.5	1.2	1.0	1.2	1.6	M	Homicide	E960-E969/ X85-X99, Y00-Y09
1.2	1.2	0.9	1.0	0.7	0.7	0.6	0.7	1.1	1.1	F		
17743	16639	15517	14703	12230	11460	9899	8256	5850	4886	M	POPULATION	
17494	16571	15667	14934	12731	12495	11568	10943	9528	10842	F	(1000s; UN, 2004 revision)	

EU25 (European Union - 25 countries): 1995, 2000

Male smoking-attributed deaths (Sm.) and total deaths (Total)

		ALL CAUSES	ALL CANCER	Lung cancer	Upper aero-digestive ca. (see below)	Other cancer	COPD	Other respiratory	Vascular disease	Liver cirrhosis	Other medical	Non-medical
1995												
0-34	Sm.	-	-	-	-	-	-	-	-	-	-	-
	Total	110708	7610	330	203	7077	447	2158	6345	1294	41123	51731
35-69	Sm.	290359	139453	89030	23415	27008	18339	5306	90162	-	37099	-
	Total	863183 (34%)	292651 (48%)	95775 (93%)	35176 (67%)	161700 (17%)	23475 (78%)	17985 (30%)	292581 (31%)	39767	114647 (32%)	82077
70+	Sm.	265710	108327	70535	9949	27843	54094	8273	74489	-	20527	-
	Total	1322558 (20%)	316533 (34%)	77697 (91%)	16984 (59%)	221852 (13%)	74582 (73%)	73717 (11%)	627557 (12%)	12508	181564 (11%)	36097
Any age	Sm.	556069	247780	159565	33364	54851	72433	13579	164651	-	57626	-
	Total	2296449 (24%)	616794 (40%)	173802 (92%)	52363 (64%)	390629 (14%)	98504 (74%)	93860 (14%)	926483 (18%)	53569	337334 (17%)	169905
2000												
0-34	Sm.	-	-	-	-	-	-	-	-	-	-	-
	Total	85395	6596	228	177	6191	344	1613	4884	836	28349	42773
35-69	Sm.	244113	124417	80303	20751	23363	14416	4870	68451	-	31959	-
	Total	779132 (31%)	276498 (45%)	87305 (92%)	32585 (64%)	156608 (15%)	19118 (75%)	18514 (26%)	243631 (28%)	36867	109687 (29%)	74817
70+	Sm.	262629	114291	75257	10199	28835	50208	9041	67038	-	22051	-
	Total	1349768 (19%)	342578 (33%)	83379 (90%)	17796 (57%)	241403 (12%)	70089 (72%)	85612 (11%)	597001 (11%)	11802	205812 (11%)	36874
Any age	Sm.	506742	238708	155560	30950	52198	64624	13911	135489	-	54010	-
	Total	2214295 (23%)	625672 (38%)	170912 (91%)	50558 (61%)	404202 (13%)	89551 (72%)	105739 (13%)	845516 (16%)	49505	343848 (16%)	154464

To be conservative, no deaths before age 35, and none from liver cirrhosis or non-medical causes, were attributed to smoking

Male death rates used for calculations: ICD codes as on previous page

	All ages	0-34	35-69	35-39	40-44	45-49	50-54	55-59	60-64	65-69	70-74	75-79	80+/NK
POPULATION (1000s; UN, 2004 revision)													
1995	217790	107755	93240	16747	15745	15113	12742	12220	10975	9698	7575	4190	5031
2000	220612	103429	98191	17743	16639	15517	14703	12230	11460	9899	8256	5850	4886
NUMBER OF DEATHS (Source: WHO)													
All causes													
1995	2296449	110708	863183	38244	52611	72389	92408	138600	198069	270862	326697	278765	717096
2000	2214295	85395	779132	30456	46689	68880	96048	119687	175918	241454	314309	355313	680146
Lung cancer													
1995	173802	330	95775	864	2605	5827	9948	17230	25625	33676	32840	20485	24372
2000	170912	228	87305	617	2262	5562	10488	15326	22936	30114	33260	27428	22691
ANNUAL DEATH RATE / 100,000 (*The rates for the age groups 0-34 and 35-69 are the means of seven five-yearly rates, but the all-ages rates are standardised to the conventional "European" age distribution)													
All causes													
1995	992.1*	100.3*	1071.2*	228.4	334.1	479.0	725.2	1134.2	1804.7	2793.0	4313.1	6653.6	14253.7
2000	896.5*	80.8*	928.9*	171.7	280.6	443.9	653.3	978.6	1535.1	2439.1	3807.2	6073.5	13919.0
All cancer													
1995	268.9*	6.8*	372.0*	28.2	65.9	134.7	248.1	419.4	683.8	1023.8	1409.3	1844.4	2633.9
2000	252.6*	6.1*	338.3*	23.1	56.5	124.8	229.2	382.3	612.2	939.8	1324.5	1792.7	2626.6
Lung cancer													
1995	76.3*	0.3*	122.9*	5.2	16.5	38.6	78.1	141.0	233.5	347.3	433.6	488.9	484.4
2000	69.2*	0.2*	107.7*	3.5	13.6	35.8	71.3	125.3	200.1	304.2	402.9	468.8	464.4
Upper aerodigestive cancer (mouth, oesophagus, pharynx and larynx)													
1995	23.6*	0.2*	42.9*	3.0	11.8	25.5	43.0	57.7	74.9	84.7	92.2	100.3	115.2
2000	21.2*	0.2*	38.1*	2.3	9.2	23.2	38.8	52.7	64.1	76.3	83.6	93.7	110.9
Other cancer													
1995	169.0*	6.3*	206.2*	20.0	37.6	70.7	127.0	220.7	375.4	591.8	883.6	1255.2	2034.2
2000	162.1*	5.7*	192.5*	17.3	33.7	65.8	119.0	204.3	347.9	559.3	838.1	1230.2	2051.4
Chronic obstructive pulmonary disease (COPD)													
1995	41.6*	0.4*	31.4*	1.1	2.3	5.0	11.1	24.3	57.2	118.7	229.6	397.6	805.6
2000	35.1*	0.3*	24.7*	0.9	2.1	4.2	8.7	20.4	44.2	92.1	184.1	331.2	726.8
Other respiratory disease													
1995	39.4*	2.0*	22.7*	4.3	6.9	8.6	12.7	19.9	37.1	69.7	143.2	297.8	1001.6
2000	42.1*	1.6*	22.7*	3.5	6.0	8.5	12.8	20.0	36.9	70.8	143.4	308.7	1140.1
Vascular disease													
1995	394.9*	5.5*	373.9*	36.3	74.4	129.2	217.7	379.3	666.2	1114.2	1860.2	3054.2	7129.7
2000	337.1*	4.4*	299.0*	25.6	59.6	113.5	187.7	301.3	513.1	892.2	1510.7	2580.7	6575.4
Liver cirrhosis													
1995	24.3*	1.1*	46.6*	13.8	24.2	33.5	46.0	61.1	73.2	74.4	75.6	73.9	73.2
2000	21.1*	0.7*	41.3*	9.7	21.5	33.6	40.9	51.9	63.1	68.2	65.1	62.7	56.5
Other medical causes													
1995	148.1*	39.5*	135.8*	64.6	71.0	82.2	101.7	139.3	198.3	293.7	473.1	820.7	2213.2
2000	142.6*	29.1*	126.1*	42.9	59.5	78.6	96.9	127.9	186.7	289.8	471.2	841.2	2408.7
All non-medical causes													
1995	75.0*	45.1*	88.8*	80.1	89.5	85.7	87.9	90.9	89.0	98.6	121.9	165.0	396.6
2000	65.9*	38.7*	77.0*	66.0	75.4	80.7	77.1	74.8	78.9	86.1	108.1	156.3	384.8

1995, 2000: EU25 (European Union - 25 countries)

Female smoking-attributed deaths (Sm.) and total deaths (Total)

		ALL CAUSES	ALL CANCER	Lung cancer	Upper aero-digestive ca. (see below)	Other cancer	COPD	Other respiratory	Vascular disease	Liver cirrhosis	Other medical	Non-medical
1995												
0-34	Sm.	-	-	-	-	-	-	-	-	-	-	-
	Total	49455	6751	183	85	6483	329	1290	3233	490	24113	13249
35-69	Sm.	45001	17599	13546	1598	2455	5411	1036	14622	-	6333	-
	Total	438618	188304	21532	5010	161762	10349	8329	128204	16026	61792	25614
		(10%)	(9%)	(63%)	(32%)	(2%)	(52%)	(12%)	(11%)		(10%)	
70+	Sm.	92832	22215	15817	2539	3859	20266	5164	34849	-	10338	-
	Total	1785665	291535	25373	7551	258611	46412	100169	969673	10500	318114	49262
		(5%)	(8%)	(62%)	(34%)	(1%)	(44%)	(5%)	(4%)		(3%)	
Any age	Sm.	137833	39814	29363	4137	6314	25677	6200	49471	-	16671	-
	Total	2273738	486590	47088	12646	426856	57090	109788	1101110	27016	404019	88125
		(6%)	(8%)	(62%)	(33%)	(1%)	(45%)	(6%)	(4%)		(4%)	
2000												
0-34	Sm.	-	-	-	-	-	-	-	-	-	-	-
	Total	38648	5728	146	75	5507	236	922	2528	366	17978	10890
35-69	Sm.	45625	20041	15601	1827	2613	5046	1162	12520	-	6856	-
	Total	397217	180930	23758	5219	151953	9115	9199	101287	14429	58877	23380
		(11%)	(11%)	(66%)	(35%)	(2%)	(55%)	(13%)	(12%)		(12%)	
70+	Sm.	102221	26042	18763	2871	4408	22084	5979	35305	-	12811	-
	Total	1801928	306305	29198	7931	269176	45393	114284	923715	9480	356024	46727
		(6%)	(9%)	(64%)	(36%)	(2%)	(49%)	(5%)	(4%)		(4%)	
Any age	Sm.	147846	46083	34364	4698	7021	27130	7141	47825	-	19667	-
	Total	2237793	492963	53102	13225	426636	54744	124405	1027530	24275	432879	80997
		(7%)	(9%)	(65%)	(36%)	(2%)	(50%)	(6%)	(5%)		(5%)	

To be conservative, no deaths before age 35, and none from liver cirrhosis or non-medical causes, were attributed to smoking

Female death rates used for calculations

		All ages	0-34	35-69	35-39	40-44	45-49	50-54	55-59	60-64	65-69	70-74	75-79	80+/ <i>NK</i>
POPULATION (1000s; UN, 2004 revision)														
1995		229903	103977	97117	16585	15752	15067	12928	12838	12123	11823	10855	6828	11125
2000		232287	99514	101460	17494	16571	15667	14934	12731	12495	11568	10943	9528	10842
NUMBER OF DEATHS (Source: WHO)														
All causes														
1995		2273738	49455	438618	15589	23665	34015	43947	65154	98279	157969	248161	270318	1267186
2000		2237793	38648	397217	13782	21922	33476	46831	58645	88342	134219	217336	339920	1244672
Lung cancer														
1995		47088	183	21532	407	980	1800	2411	3314	5205	7415	8692	6380	10301
2000		53102	146	23758	354	1129	2167	3270	4211	5461	7166	9082	9199	10917
ANNUAL DEATH RATE / 100,000 (*The rates for the age groups 0-34 and 35-69 are the means of seven five-yearly rates, but the all-ages rates are standardised to the conventional "European" age distribution)														
All causes														
1995		581.8*	48.6*	494.9*	94.0	150.2	225.8	339.9	507.5	810.7	1336.1	2286.1	3959.0	11390.1
2000		542.2*	39.8*	438.0*	78.8	132.3	213.7	313.6	460.6	707.0	1160.2	1986.1	3567.5	11480.2
All cancer														
1995		148.7*	6.1*	211.5*	34.0	65.3	111.4	172.5	245.7	353.1	498.5	684.6	899.7	1400.3
2000		141.9*	5.3*	198.5*	29.1	59.3	103.4	162.0	237.7	332.5	465.1	644.1	877.7	1403.7
Lung cancer														
1995		15.2*	0.2*	24.4*	2.5	6.2	11.9	18.6	25.8	42.9	62.7	80.1	93.4	92.6
2000		16.3*	0.1*	26.2*	2.0	6.8	13.8	21.9	33.1	43.7	61.9	83.0	96.5	100.7
Upper aerodigestive cancer (mouth, oesophagus, pharynx and larynx)														
1995		3.9*	0.1*	5.6*	0.6	1.6	3.1	5.6	6.6	9.4	12.7	16.6	23.1	37.5
2000		3.9*	0.1*	5.7*	0.4	1.7	3.5	5.4	7.7	9.4	11.7	15.8	20.8	38.9
Other cancer														
1995		129.7*	5.8*	181.5*	31.0	57.6	96.3	148.2	213.4	300.8	423.1	588.0	783.2	1270.1
2000		121.7*	5.1*	166.6*	26.6	50.8	86.0	134.8	196.9	279.4	391.4	545.3	760.3	1264.1
Chronic obstructive pulmonary disease (COPD)														
1995		14.4*	0.3*	12.0*	0.8	1.4	2.8	5.4	10.7	21.3	41.6	75.9	124.7	266.5
2000		13.0*	0.2*	10.4*	0.7	1.2	2.6	5.4	10.0	17.6	35.7	66.5	109.4	255.4
Other respiratory disease														
1995		24.0*	1.3*	9.5*	1.9	2.8	3.6	5.3	8.0	15.1	29.6	65.1	161.7	737.5
2000		26.3*	1.0*	10.3*	1.9	2.7	4.1	5.9	9.5	16.1	31.8	67.3	156.3	848.8
Vascular disease														
1995		253.0*	2.9*	148.0*	12.7	23.9	41.4	69.3	125.9	253.0	509.9	1029.7	2008.5	6478.6
2000		223.5*	2.4*	115.2*	10.4	20.4	36.2	58.4	96.9	191.8	392.3	813.3	1682.0	6220.8
Liver cirrhosis														
1995		9.7*	0.4*	17.6*	4.7	9.0	12.4	18.2	22.1	26.0	30.4	34.7	37.3	37.6
2000		8.3*	0.3*	15.3*	3.9	7.4	12.2	15.7	19.5	23.0	25.2	28.8	32.2	30.1
Other medical causes														
1995		104.6*	25.3*	69.2*	20.4	25.3	31.4	43.4	66.8	111.2	186.1	337.3	629.8	2143.8
2000		104.9*	20.1*	64.6*	16.6	22.4	32.5	43.3	62.6	99.1	175.9	316.3	624.2	2416.0
All non-medical causes														
1995		27.5*	12.3*	27.1*	19.5	22.4	22.7	26.0	28.1	30.9	39.9	58.8	97.2	325.8
2000		24.4*	10.5*	23.8*	16.2	18.9	22.8	22.8	24.4	26.9	34.3	49.7	85.7	305.5

EU25 (European Union - 25 countries): 2000

Relative importance of deaths in MIDDLE age (35–69) in the year 2000

Age range (years)	Deaths attributed to SMOKING /total deaths (thousands)		Mean years lost PER DEATH FROM SMOKING
	Male	Female	
0–34	– / 85	– / 39	–
35–69	244 / 779	46 / 397	22 years
70+	263 / 1350	102 / 1802	8 years
All ages	507 / 2214	148 / 2238	14 years

Deaths, by cause, attributed to SMOKING / total deaths (thousands) in the year 2000

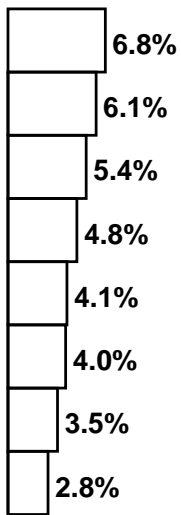
Cause	Male (by age)				Female (by age)			
	0–34	35–69	70+	All	0–34	35–69	70+	All
Lung Cancer	–/0.2	80/87	75/83	156/171	–/0.1	16/24	19/29	34/53
All Cancer	–/6.6	124/276 (45%)	114/343 (33%)	239/626	–/5.7	20/181 (11%)	26/306 (9%)	46/493
Vascular	–/4.9	68/244	67/597	135/846	–/2.5	13/101	35/924	48/1028
Respiratory	–/2.0	19/38	59/156	79/195	–/1.2	6.2/18	28/160	34/179
All Other	–/72	32/221	22/254	54/548	–/29	6.9/97	13/412	20/538
All Causes	–/85	244/779 (31%)	263/1350 (19%)	507/2214	–/39	46/397 (11%)	102/1802 (6%)	148/2238

Cancer deaths, and all deaths, attributed to SMOKING / total deaths (thousands) in the year 2000

Cause	Male	Female	Male + Female
All Cancer	239 / 626 (38%)	46 / 493 (9%)	285 / 1119 (25%)
All Causes	507 / 2214 (23%)	148 / 2238 (7%)	655 / 4452 (15%)

1965-2000: EU25 (European Union - 25 countries)

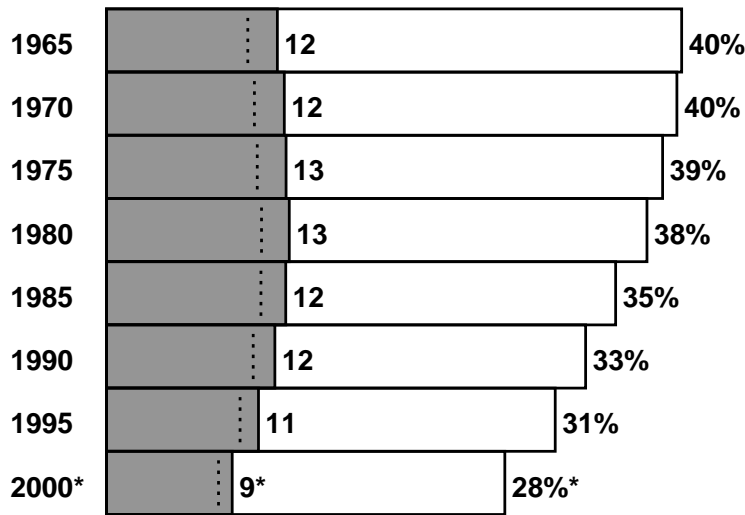
Population risk of dying at ages 0-34



Population risk of a 35-year-old dying at ages 35-69 from smoking (shaded) or from any cause (shaded and white)

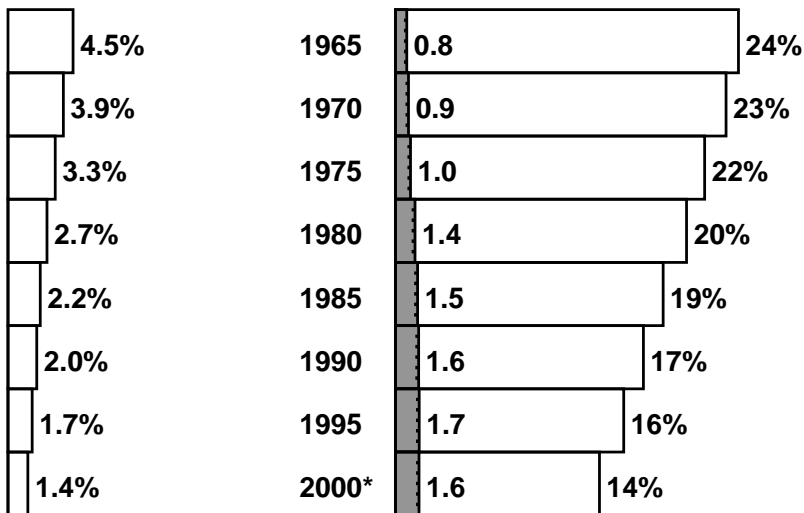
*eg, at year 2000 male death rates, out of 100 men aged 35, 28 would die before age 70 (with 9 of these deaths attributed to smoking)

MALE



Note: Most of those killed by smoking would otherwise have survived beyond age 70, but a minority (shaded area to right of dotted line) would have died by 70 anyway

FEMALE



EU25 (European Union - 25 countries): 1960-2000
--

Numbers of deaths attributed to smoking / total deaths (thousands)

Year	Male (by age)				Female (by age)			
	0-34	35-69	70+	All	0-34	35-69	70+	All
1950
1955
1960
1965	-/227	273/914 (30%)	120/987 (12%)	393/2128	-/147	19/593 (3%)	14/1248 (1%)	34/1988
1970	-/203	296/955 (31%)	172/1071 (16%)	469/2229	-/123	23/593 (4%)	22/1387 (2%)	45/2103
1975	-/177	299/934 (32%)	232/1202 (19%)	532/2313	-/101	27/559 (5%)	32/1527 (2%)	59/2187
1980	-/156	300/887 (34%)	258/1285 (20%)	559/2328	-/83	33/508 (7%)	42/1621 (3%)	75/2212
1985	-/133	301/846 (36%)	281/1353 (21%)	581/2331	-/67	38/463 (8%)	60/1741 (3%)	98/2271
1990	-/129	312/888 (35%)	253/1283 (20%)	565/2301	-/59	44/473 (9%)	73/1729 (4%)	116/2262
1995	-/111	290/863 (34%)	266/1323 (20%)	556/2296	-/49	45/439 (10%)	93/1786 (5%)	138/2274
2000	-/85	244/779 (31%)	263/1350 (19%)	507/2214	-/39	46/397 (11%)	102/1802 (6%)	148/2238

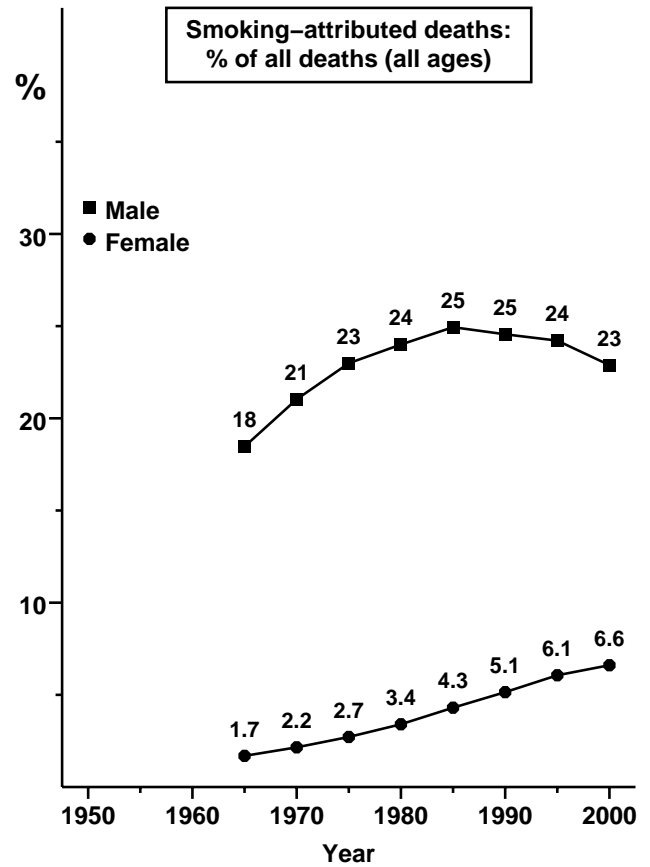
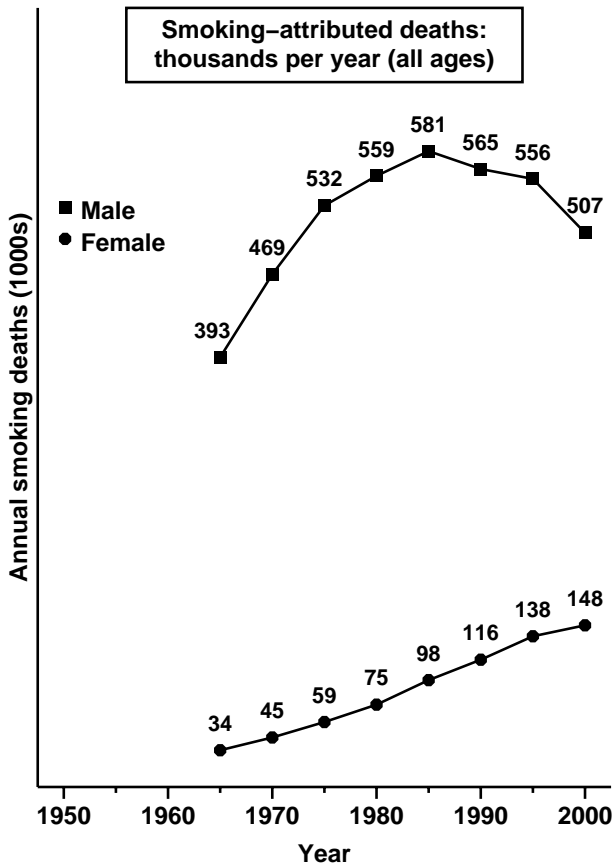
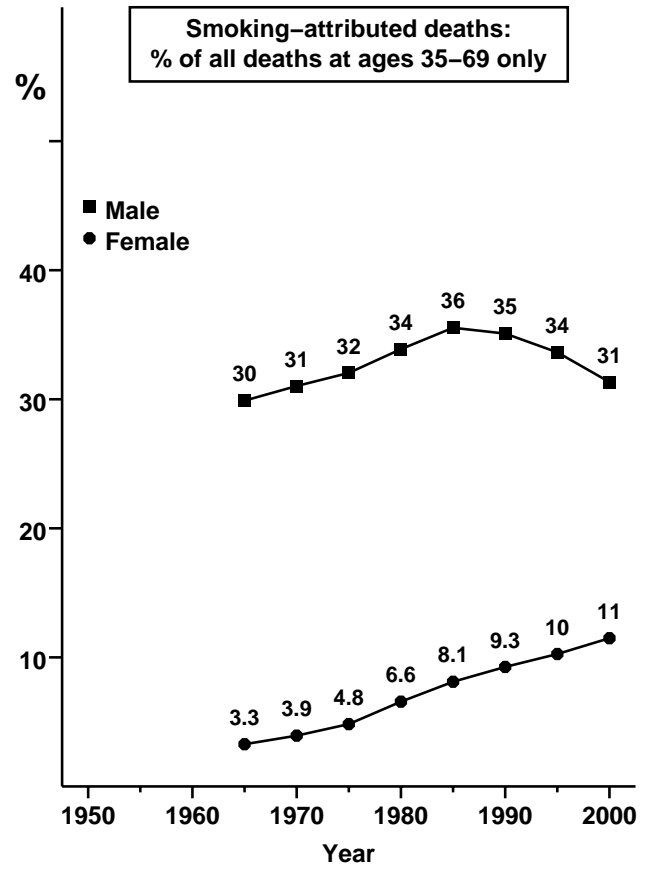
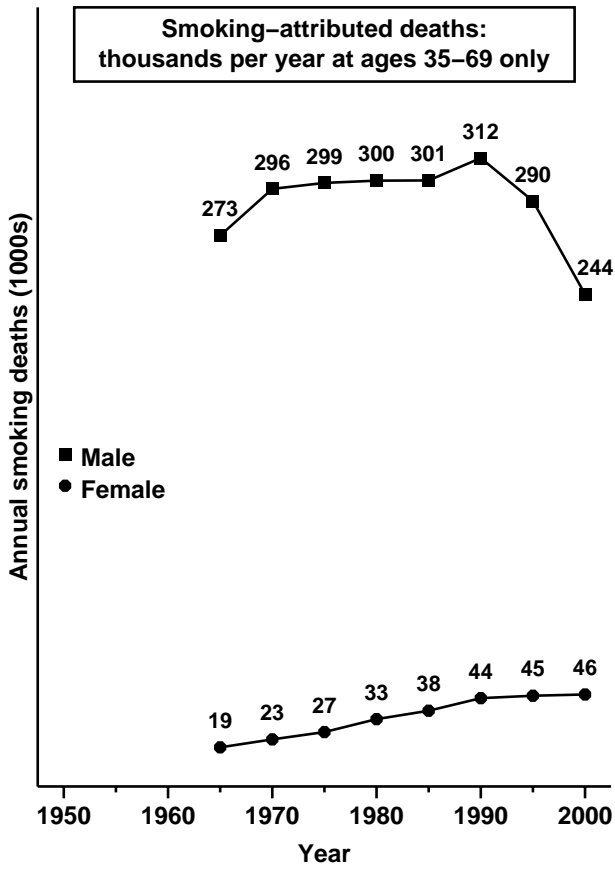
40-year total* (M=millions), mid-1960 to mid-2000: 24/ 178M

1960-2000 by age & sex:

-/6.5M	12/36M	9.0/49M	21/91M	-/3.6M	1.3/21M	2.0/63M	3.3/87M
	(33%)	(18%)			(6%)	(3%)	

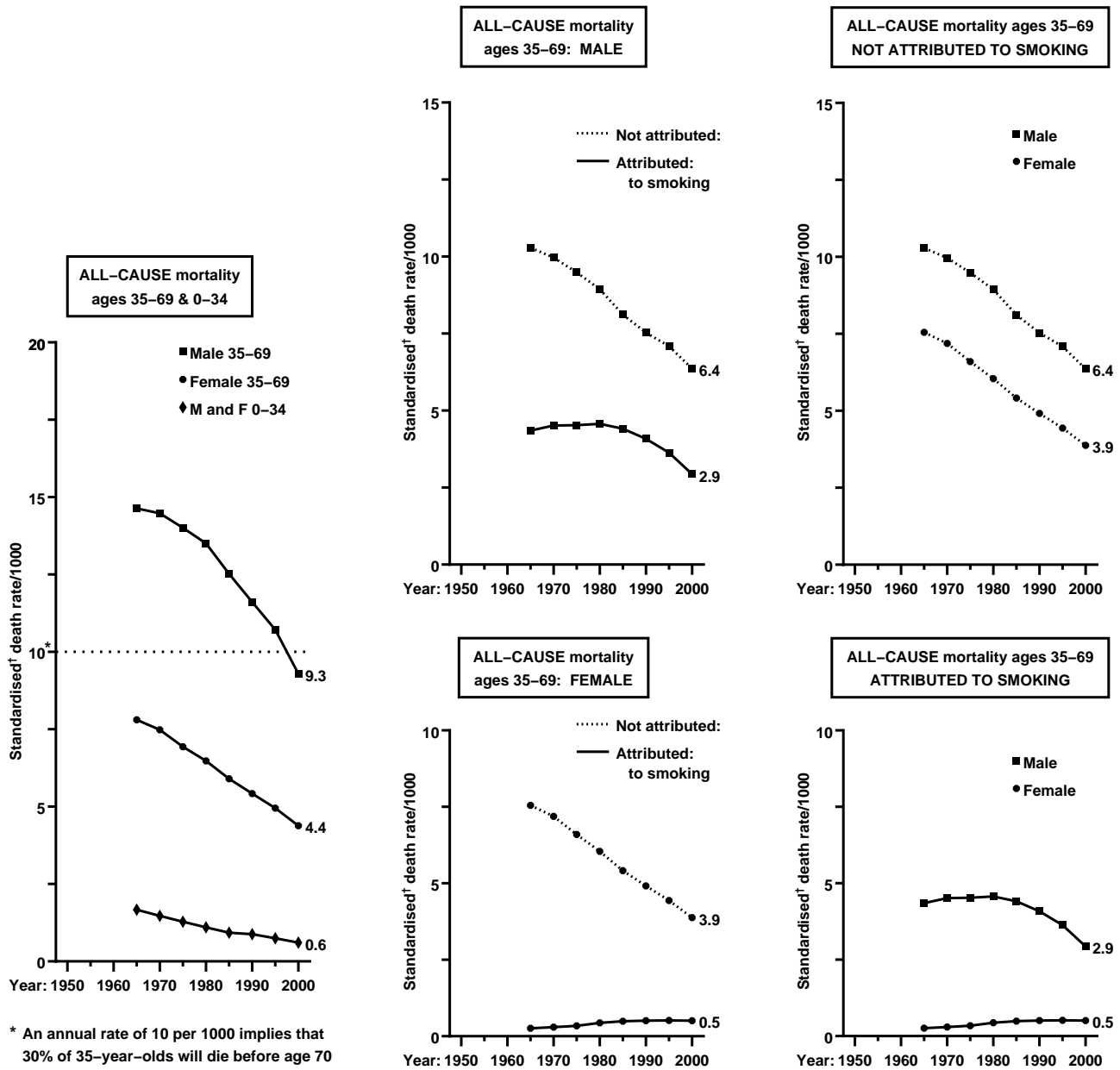
*Estimated as 10 times the sum of the annual numbers for 1965, 1975, 1985 & 1995

1965-2000: EU25 (European Union - 25 countries)



EU25 (European Union - 25 countries): 1965-2000

ALL-CAUSE mortality rates attributed and not attributed to smoking

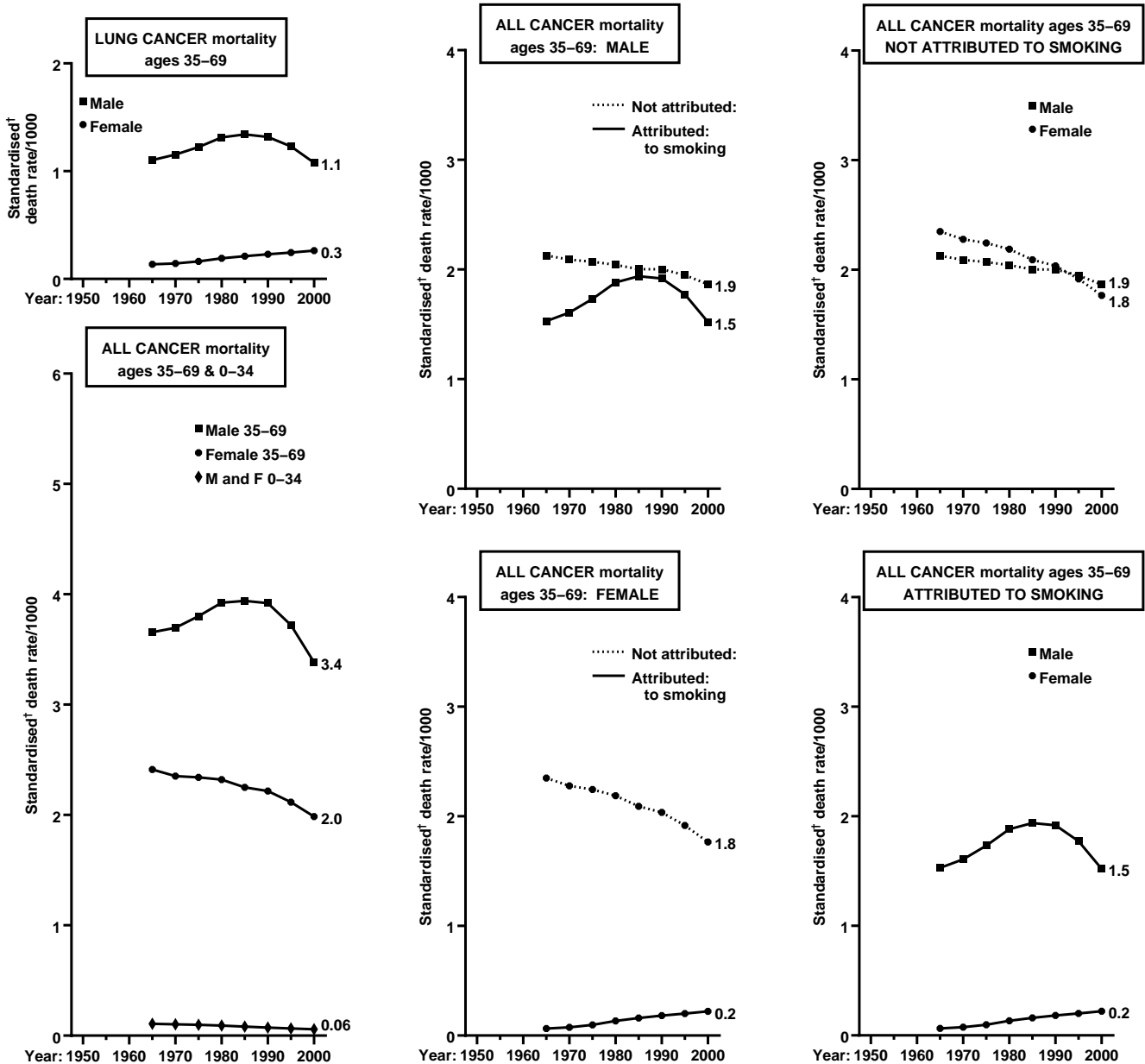


Year	MALE all-cause mortality (annual rate/1000, by age)								FEMALE all-cause mortality (annual rate/1000, by age)									
	0-34		35-69		70-79		0-34		35-69		70-79		0-34		35-69		70-79	
	Attributed to smoking?	Yes	No	Yes	No	Yes	No	Yes	No	Yes	No	Yes	No	Yes	No	Yes	No	
1950	
1955	
1960	
1965	-	2.01	4.35	10.3	11.0	67.2	-	1.33	0.26	7.55	0.76	53.2	-	1.12	0.29	7.19	0.96	50.4
1970	-	1.81	4.51	9.96	14.3	64.0	-	0.96	0.34	6.59	1.21	47.3	-	0.79	0.43	6.04	1.35	41.3
1975	-	1.60	4.52	9.48	16.0	61.9	-	0.65	0.49	5.41	1.75	37.9	-	0.58	0.51	4.91	2.01	32.7
1980	-	1.41	4.41	8.11	16.0	53.2	-	0.49	0.51	4.44	2.27	29.0	-	0.49	0.51	4.44	2.27	29.0
1985	-	1.20	4.08	7.53	13.8	46.6	-	0.40	0.51	3.88	2.16	25.6	-	0.40	0.51	3.88	2.16	25.6
1990	-	1.17	3.63	7.08	11.2	38.2	-	0.40	0.51	3.88	2.16	25.6	-	0.40	0.51	3.88	2.16	25.6
1995	-	1.00	2.93	6.36	11.2	38.2	-	0.40	0.51	3.88	2.16	25.6	-	0.40	0.51	3.88	2.16	25.6
2000	-	0.81	2.93	6.36	11.2	38.2	-	0.40	0.51	3.88	2.16	25.6	-	0.40	0.51	3.88	2.16	25.6

0-34 and 35-69 = means of 7 age-specific rates; 70-79 = mean of 2 rates (70-74 & 75-79)

1965-2000: EU25 (European Union - 25 countries)

ALL CANCER mortality rates attributed and not attributed to smoking



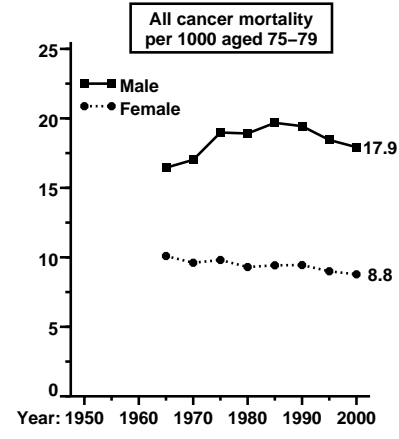
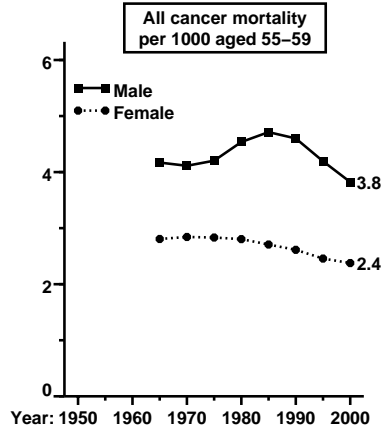
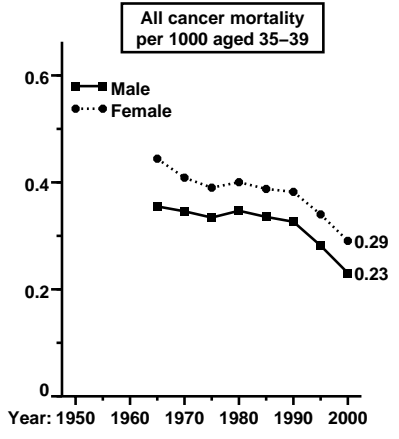
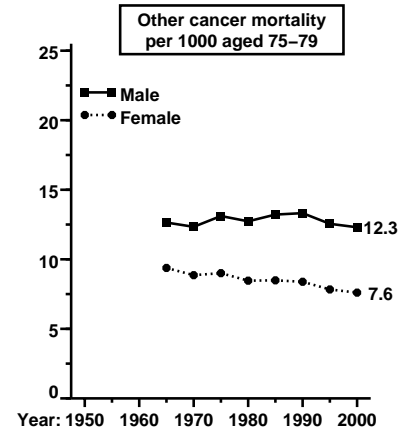
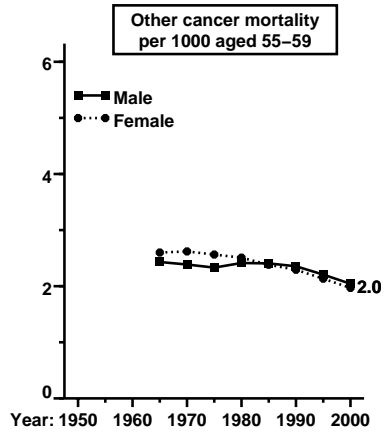
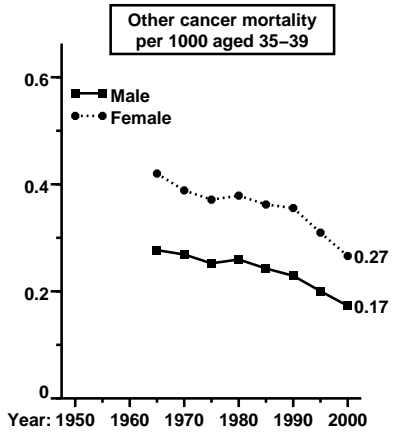
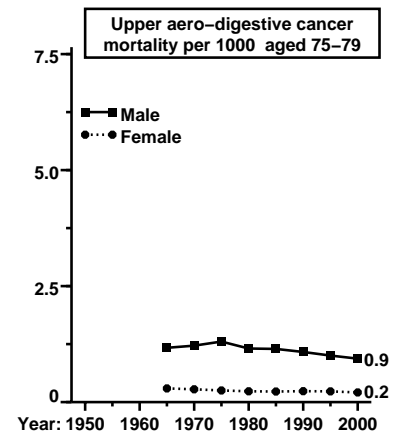
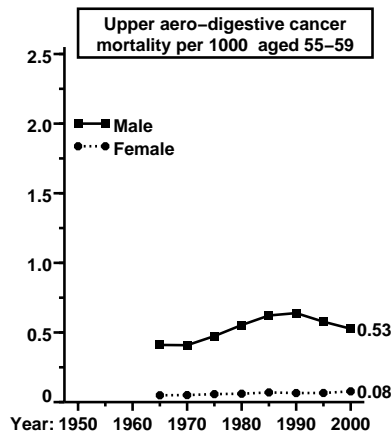
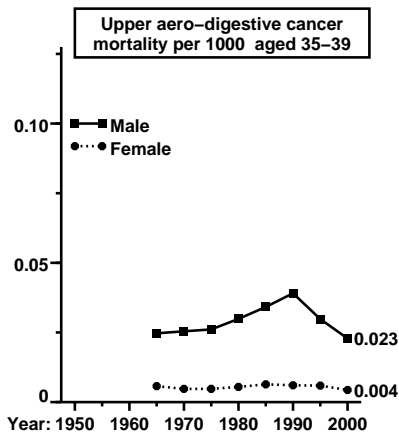
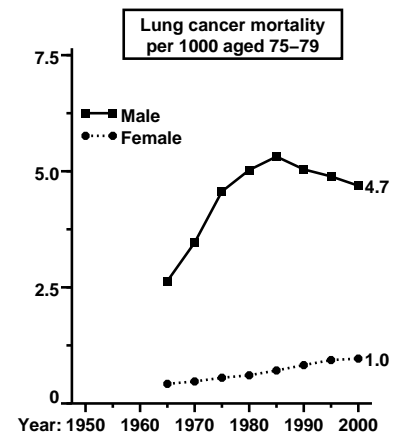
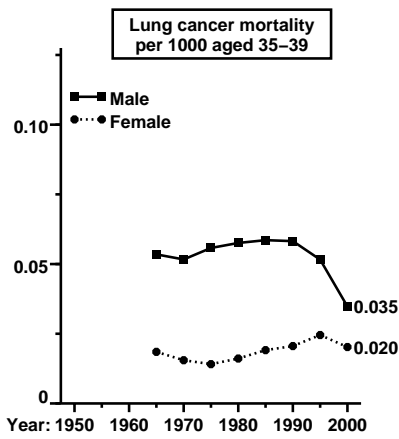
† Mean of 7 age-specific rates, ages 35-69 (or ages 0-34)

Year	MALE cancer mortality (annual rate/1000, by age)								FEMALE cancer mortality (annual rate/1000, by age)									
	0-34		35-69		70-79		0-34		35-69		70-79		0-34		35-69		70-79	
	Attributed to smoking?	Yes	No	Yes	No	Yes	No	Yes	No	Yes	No	Yes	No	Yes	No	Yes	No	
1950	
1955	
1960	
1965	-	0.11		1.53	2.13	3.74	11.1	-	0.10	0.06	2.35	0.15	8.72					
1970	-	0.11		1.61	2.09	4.84	10.6	-	0.09	0.07	2.28	0.20	8.21					
1975	-	0.11		1.73	2.07	6.05	10.8	-	0.09	0.10	2.24	0.27	8.18					
1980	-	0.10		1.88	2.04	6.40	10.3	-	0.08	0.13	2.19	0.35	7.77					
1985	-	0.09		1.94	2.00	6.63	10.5	-	0.07	0.16	2.09	0.48	7.77					
1990	-	0.08		1.92	2.00	6.27	10.4	-	0.07	0.18	2.03	0.62	7.46					
1995	-	0.07		1.77	1.95	6.13	10.1	-	0.06	0.20	1.92	0.74	7.19					
2000	-	0.06		1.52	1.86	5.70	9.88	-	0.05	0.22	1.76	0.76	6.84					

0-34 and 35-69 = means of 7 age-specific rates; 70-79 = mean of 2 rates (70-74 & 75-79)

EU25 (European Union - 25 countries): 1965-2000

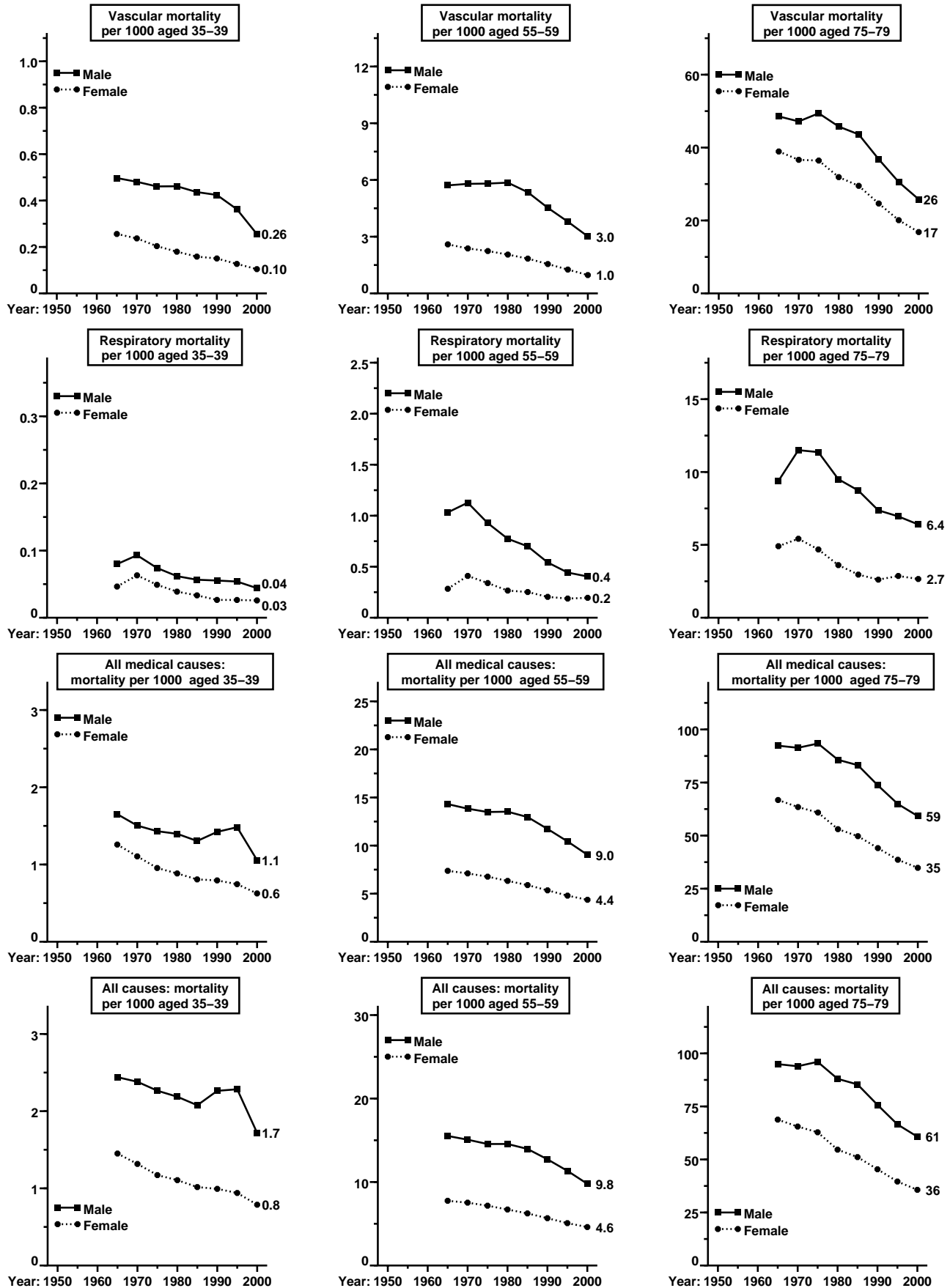
Mortality* trends at selected ages: 35-39, 55-59 & 75-79



* Annual mortality per 1000: 1965, 1970, 1975, 1980, 1985, 1990, 1995 and 2000

1965-2000: EU25 (European Union - 25 countries)

Mortality* trends at selected ages: 35-39, 55-59 & 75-79



* Annual mortality per 1000: 1965, 1970, 1975, 1980, 1985, 1990, 1995 and 2000